

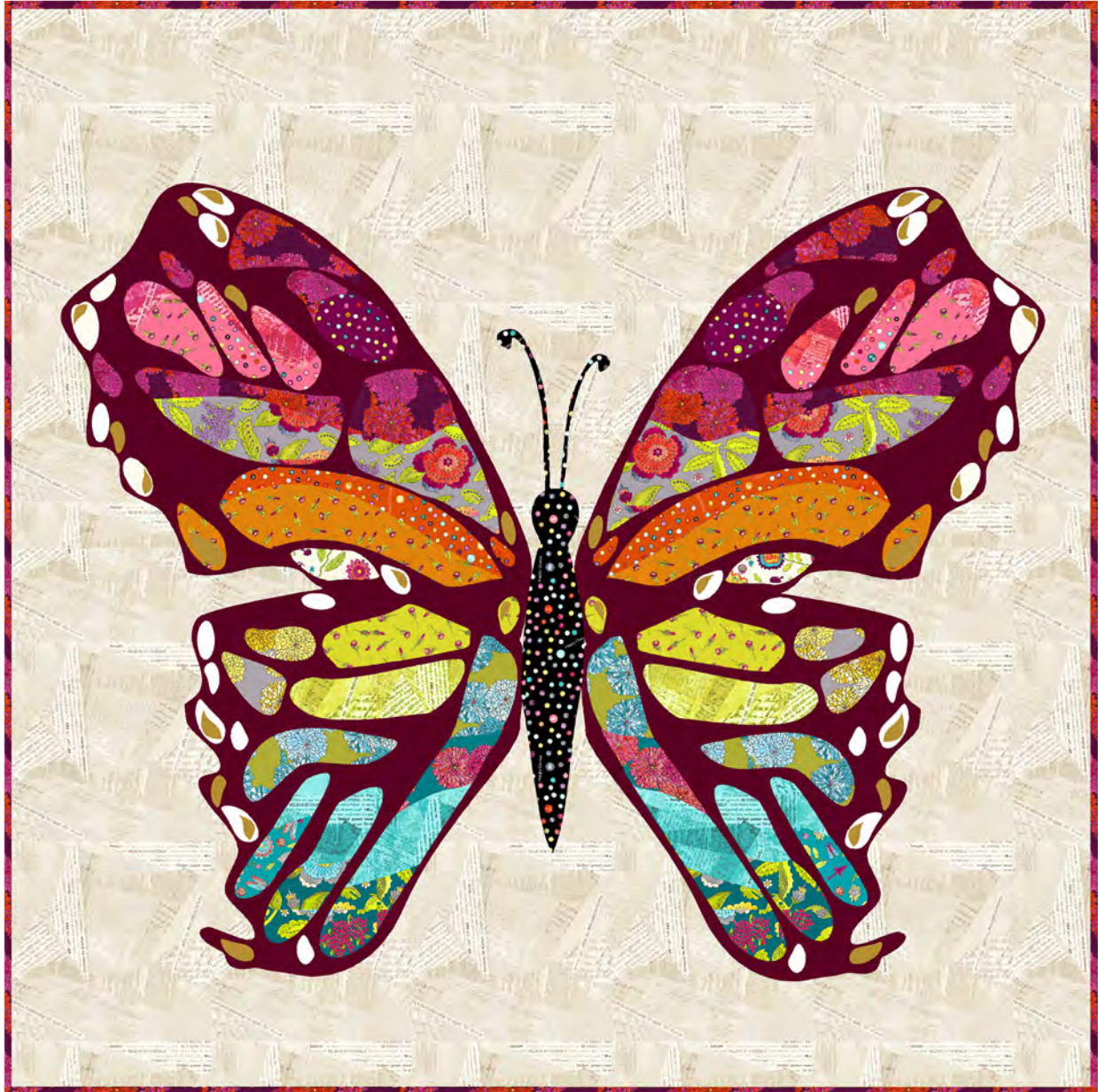
# Take Flight

designed by Natalie Crabtree

featuring *Happy Chance* by Laura Heine, *Ruby + Bee Solids* by Heather Ross and  
Annabel Wrigley, and *Windham Solids*

SIZE: 65" x 65"

ADVANCED  
SKILL



THIS IS A DIGITAL REPRESENTATION OF THE QUILT TOP, FABRIC MAY VARY.




# Take Flight

## CUTTING INSTRUCTIONS:

*Designer Note: Mark and store your cut pieces according to the label they have been given for organization and ease while assembling. Be sure to read the entire pattern before you begin. Pattern assumes basic raw edge applique and template knowledge. Applique templates should be traced onto fusible first, then roughly cut out to prepare for fusing. Then proceed with cutting instructions for **Fabrics A-V**.*

*Reversed templates are labeled with an "R" for cutting instructions and assembly instructions. For example, **Fabric A** references to cut Template B and Template BR, which indicates to cut both Template B and the mirror image reversed version of Template B.*

*If you wish to keep certain fabrics directional, reference template orientation within the pattern to assist in visualizing how to fuse templates to fabric.*

KEY	FABRIC	SKU	YD	CUTTING INSTRUCTIONS
<b>A</b>		WINDHAM SOLIDS 31835S-Linen White	¼	<p>Fuse the following templates onto the wrong side of fabric. Cut out each template on the traced line and label using the template name.</p> <ul style="list-style-type: none"> <li>• Templates B and BR</li> <li>• Templates D and DR</li> <li>• Templates I and IR</li> <li>• Templates J and JR</li> <li>• Templates U and UR</li> <li>• Templates W and WR</li> <li>• Templates II and IIR</li> <li>• Templates NN and NNR</li> <li>• Templates QQ and QQR</li> <li>• Templates RR and RR-R</li> <li>• Templates UU and UUR</li> <li>• Templates WW and WWR</li> <li>• Templates ZZ and ZZR</li> <li>• Templates CCC and CCCR</li> </ul>
<b>B</b>		HAPPY CHANCE 52695-1 Cream	3 ¾	<p>Fold the 3 ¾ yard cut of <b>Fabric B</b> in half lengthwise keeping the fabric folded in half widthwise. Cut the folded fabric in half to create (2) pieces of fabric measuring approximately 67 ½" x 42" (after trimming selvages). Sew both halves of <b>Fabric B</b> together lengthwise using a ¼" seam to create (1) piece measuring approximately 67 ½" x 83 ½". Trim the pieced <b>Fabric B</b> background fabric to 65 ½" x 65 ½" unfinished. Reference diagrams in Steps 1-2 for piecing assistance. <b>Sew around the entire edge of the 65 ½" x 65 ½" Fabric B background square using either a loose zig-zag stitch or a loose straight stitch to help prevent fraying. Or use your favorite anti-fray liquid seam sealant.</b></p>





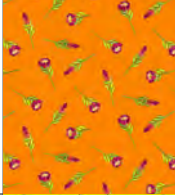
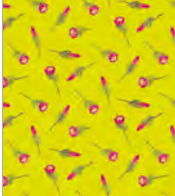




# Take Flight

C		HAPPY CHANCE 52691-3 Grey	$\frac{3}{8}$	Fuse the following templates onto the wrong side of fabric. Cut out each template on the traced line and label using the template name. <ul style="list-style-type: none"><li>• Templates Z and ZR</li><li>• Templates BB and BBR</li></ul>
D		HAPPY CHANCE 52691-4 Dk Teal	$\frac{3}{8}$	Fuse the following templates onto the wrong side of fabric. Cut out each template on the traced line and label using the template name. <ul style="list-style-type: none"><li>• Templates GGG and GGGR</li><li>• Templates LLL and LLLR</li></ul>
E		HAPPY CHANCE 52693-1 Cream	$\frac{1}{8}$	Fuse the following templates onto the wrong side of fabric. Cut out each template on the traced line and label using the template name. <ul style="list-style-type: none"><li>• Templates GG and GGR</li></ul>
F		HAPPY CHANCE 52693-5 Teal	$\frac{1}{8}$	Fuse the following templates onto the wrong side of fabric. Cut out each template on the traced line and label using the template name. <ul style="list-style-type: none"><li>• Templates EEE and EEER</li></ul>
G		HAPPY CHANCE 52694-3 Grey	$\frac{1}{4}$	Fuse the following templates onto the wrong side of fabric. Cut out each template on the traced line and label using the template name. <ul style="list-style-type: none"><li>• Templates PP and PPR</li><li>• Templates SS and SSR</li></ul>
H		HAPPY CHANCE 52694-4 Dk Teal	$\frac{1}{8}$	Fuse the following templates onto the wrong side of fabric. Cut out each template on the traced line and label using the template name. <ul style="list-style-type: none"><li>• Templates III and IIIR</li></ul>
I		HAPPY CHANCE 52694-7 Lime	$\frac{3}{8}$	Fuse the following templates onto the wrong side of fabric. Cut out each template on the traced line and label using the template name. <ul style="list-style-type: none"><li>• Templates XX and XXR</li><li>• Templates HHH and HHR</li></ul>
J		HAPPY CHANCE 52694-8 Plum INCLUDES BINDING	1	Fuse the following templates onto the wrong side of fabric. Cut out each template on the traced line and label using the template name. <ul style="list-style-type: none"><li>• Templates F and FR</li><li>• Templates G and GR</li><li>• Templates L and LR</li><li>• Templates T and TR</li><li>• Templates Y and YR</li><li>• Templates AA and AAR</li></ul> <b>FOR BINDING:</b> (7) 2 $\frac{1}{4}$ " x WOF strips for binding.



# Take Flight

<b>K</b>		HAPPY CHANCE 52695-5 Teal	$\frac{3}{8}$	Fuse the following templates onto the wrong side of fabric. Cut out each template on the traced line and label using the template name. <ul style="list-style-type: none"><li>• Templates DDD and DDR</li><li>• Templates FFF and FFFR</li><li>• Templates JJJ and JJR</li></ul>
<b>L</b>		HAPPY CHANCE 52695-9 Red	$\frac{1}{4}$	Fuse the following templates onto the wrong side of fabric. Cut out each template on the traced line and label using the template name. <ul style="list-style-type: none"><li>• Templates N and NR</li><li>• Templates P and PR</li><li>• Templates R and R-R</li></ul>
<b>M</b>		HAPPY CHANCE 52695-13 Chartreuse	$\frac{1}{8}$	Fuse the following templates onto the wrong side of fabric. Cut out each template on the traced line and label using the template name. <ul style="list-style-type: none"><li>• Templates TT and TTR</li></ul>
<b>N</b>		HAPPY CHANCE 52696-10 Pink	$\frac{1}{8}$	Fuse the following templates onto the wrong side of fabric. Cut out each template on the traced line and label using the template name. <ul style="list-style-type: none"><li>• Templates S and SR</li></ul>
<b>O</b>		HAPPY CHANCE 52696-11 Gold	$\frac{1}{4}$	Fuse the following templates onto the wrong side of fabric. Cut out each template on the traced line and label using the template name. <ul style="list-style-type: none"><li>• Templates DD and DDR</li><li>• Templates EE and EER</li></ul>
<b>P</b>		HAPPY CHANCE 52696-13 Chartreuse	$\frac{1}{4}$	Fuse the following templates onto the wrong side of fabric. Cut out each template on the traced line and label using the template name. <ul style="list-style-type: none"><li>• Templates LL and LLR</li><li>• Templates OO and OOR</li></ul>
<b>Q</b>		HAPPY CHANCE 52697-2 Black	$\frac{1}{4}$	Fuse the following templates onto the wrong side of fabric. Cut out each template on the traced line and label using the template name. <ul style="list-style-type: none"><li>• Left Butterfly Antenna</li><li>• Right Butterfly Antenna</li><li>• Butterfly Body</li></ul>
<b>R</b>		HAPPY CHANCE 52697-10 Pink	$\frac{1}{8}$	Fuse the following templates onto the wrong side of fabric. Cut out each template on the traced line and label using the template name. <ul style="list-style-type: none"><li>• Templates O and OR</li><li>• Templates Q and QR</li></ul>



# Take Flight

S		HAPPY CHANCE 52697-12 Orange	$\frac{1}{4}$	Fuse the following templates onto the wrong side of fabric. Cut out each template on the traced line and label using the template name. <ul style="list-style-type: none"> <li>• Templates CC and CCR</li> <li>• Templates KK and KKR</li> </ul>
T		HAPPY CHANCE 52697-14 Berry	$\frac{1}{4}$	Fuse the following templates onto the wrong side of fabric. Cut out each template on the traced line and label using the template name. <ul style="list-style-type: none"> <li>• Templates M and MR</li> </ul>
U		RUBY+BEE SOLIDS 51583-26 Turmeric	$\frac{1}{4}$	Fuse the following templates onto the wrong side of fabric. Cut out each template on the traced line and label using the template name. <ul style="list-style-type: none"> <li>• Templates A and AR</li> <li>• Templates C and CR</li> <li>• Templates E and ER</li> <li>• Templates H and HR</li> <li>• Templates K and KR</li> <li>• Templates X and XR</li> <li>• Templates V and VR</li> <li>• Templates FF and FFR</li> <li>• Templates HH and HHR</li> <li>• Templates JJ and JJR</li> <li>• Templates MM and MMR</li> <li>• Templates VV and VVR</li> <li>• Templates YY and YYR</li> <li>• Templates AAA and AAAR</li> <li>• Templates BBB and BBBR</li> </ul>
V		RUBY+BEE SOLIDS 51583-37 Grape Jelly	$3 \frac{1}{4}$	Unfold the available yardage so that there is only (1) layer. Lay out the Upper Wing, Upper Wing Reversed, Lower Wing and Lower Wing Reversed to ensure the best use of fabric before fusing. Once you have confirmed that all pieces fit well on the available yardage, fuse the wings in place thoroughly. Cut out each wing on the traced line and label. Once wings are cut out, you may need to use the iron to secure the fusible again due to the large size of the applique, using steam if necessary. <i>(Follow fusible web manufacturer's instructions.)</i>
		Backing	$4 \frac{1}{8}$	Batting 73" x 73", Fusible Web for Applique, Basic Sewing Supplies.

WOF=WIDTH OF FABRIC

**PROJECT DISCLAIMER:** Every effort has been made to ensure that all projects are error free. All the information is presented in good faith, however, no warranty can be given nor results guaranteed. Therefore, we assume no responsibility nor damages that may occur when referring to this pattern. When errors are brought to our attention, we make every effort to correct and post a revision as soon as possible. We suggest you test the pattern prior to making the project. Test templates first, before cutting all the pieces.

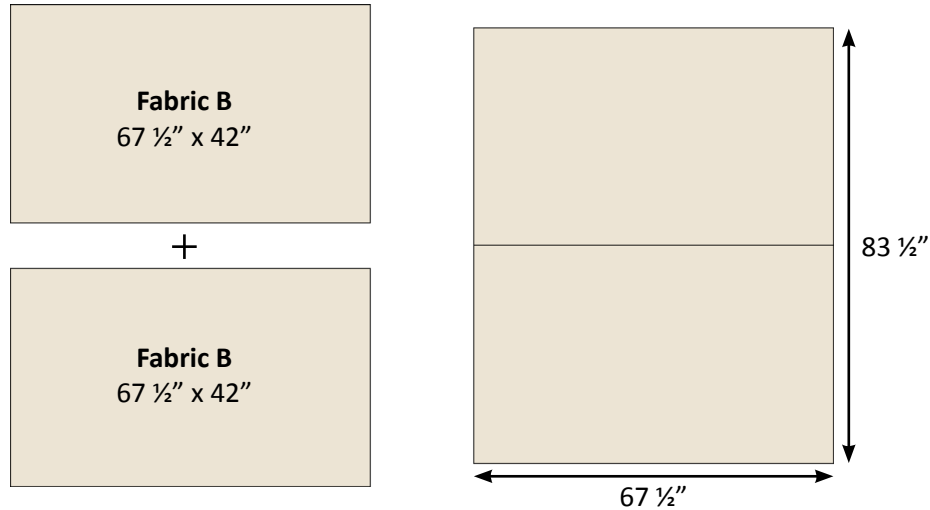


# Take Flight

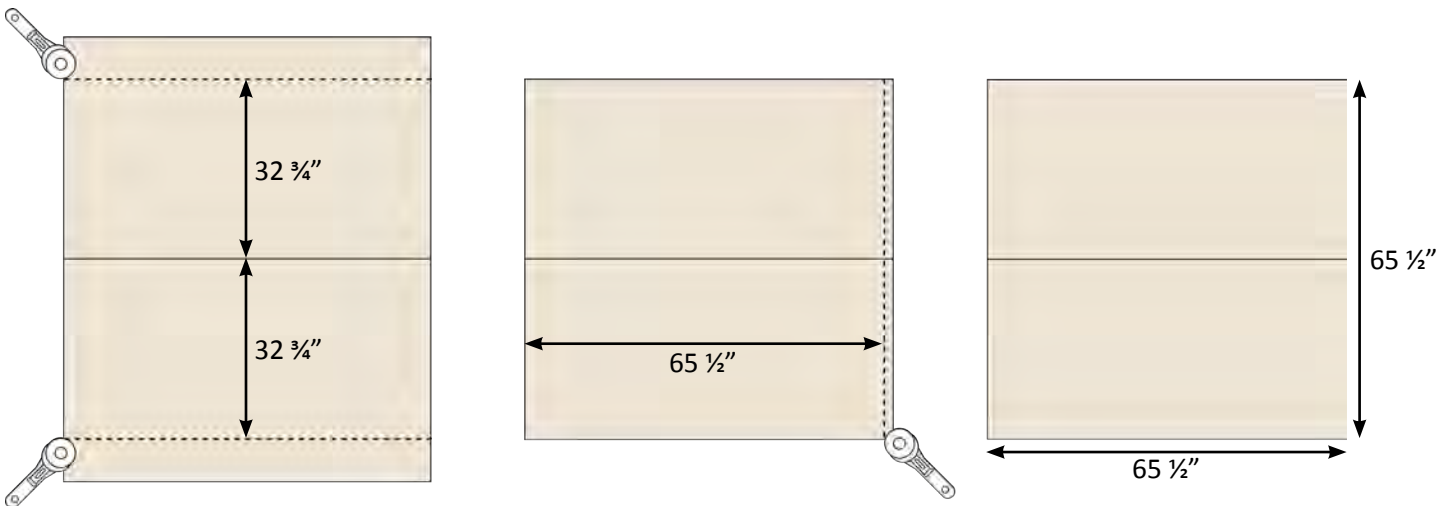
## PIECING INSTRUCTIONS

### BACKGROUND PIECING INSTRUCTIONS:

1. Create the background for the butterfly by sewing (2) 42" x 67 1/2" **Fabric B** pieces together lengthwise so that it creates a piece measuring approximately 67 1/2" x 83 1/2".



2. Trim the **Fabric B** background piece to measure 65 1/2" x 65 1/2" unfinished. When preparing to trim, center the horizontal seam within the background square. Using a measuring tape, measure 32 3/4" away from the seam, both above the seam and below the seam. Mark the measurement using an erasable marker or pen. Make several marks along the fabric using this method. Use the marks to cut the 65 1/2" x 65 1/2" **Fabric B** background square with the seam perfectly centered. This will assist in aligning and fusing the butterfly wings and body.



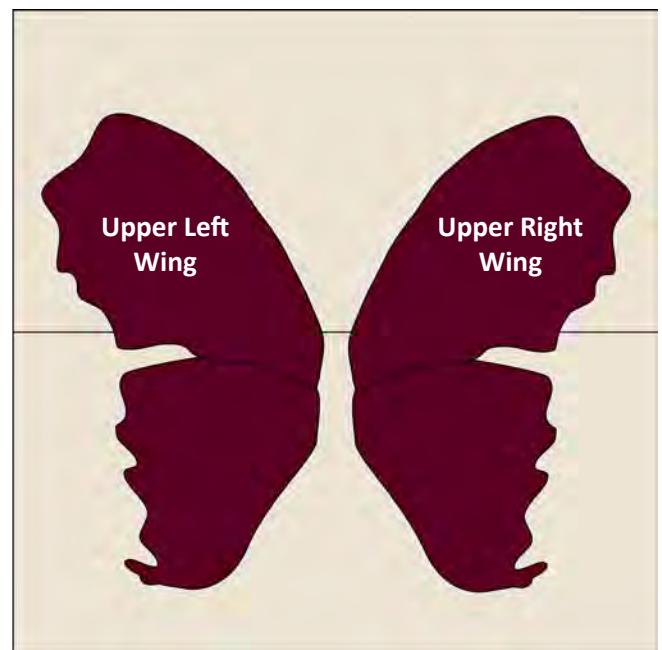
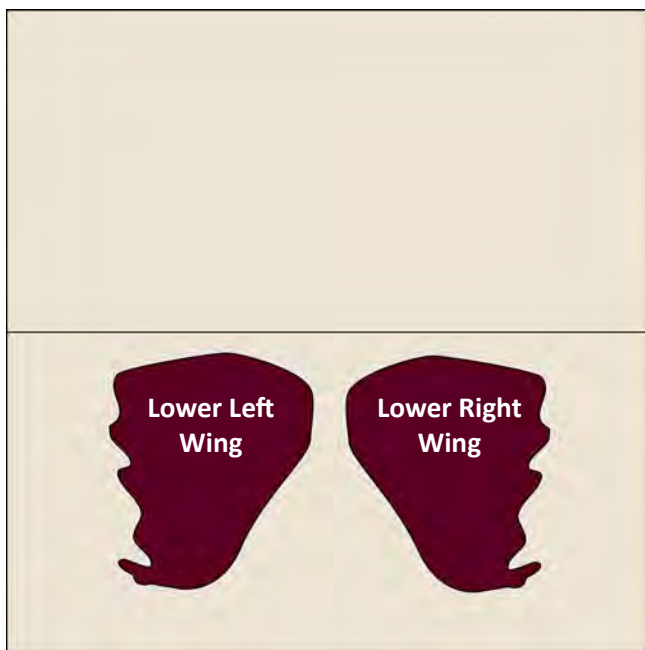
3. Sew around the entire edge of the 65 1/2" x 65 1/2" **Fabric B** background square using either a loose zig-zag stitch or a loose straight stitch to help prevent fraying. Or use your favorite anti-fray liquid seam sealant.



# Take Flight

## BUTTERFLY WING, BODY AND ANTENNA APPLIQUE INSTRUCTIONS:

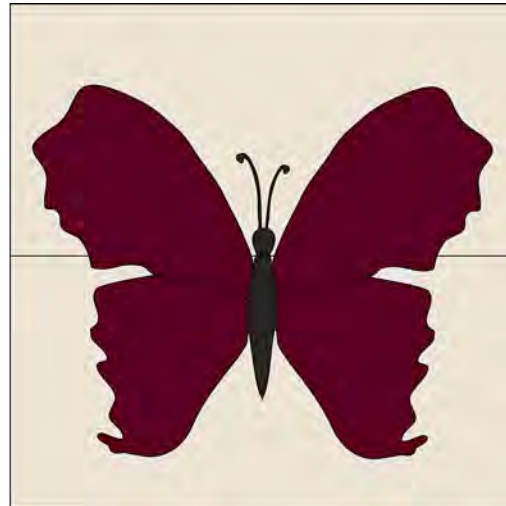
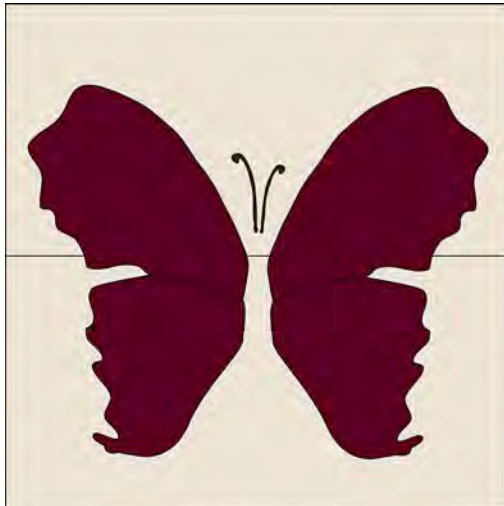
4. First, remove the paper from the glue side of each **Fabric V** Butterfly Wing to prepare for fusing. Do not iron the Butterfly Wings at this step.
5. On a large flat surface, lay out the 65 ½" x 65 ½" **Fabric B** background piece so that the seam runs horizontally.
6. Using the horizontal seam as a guide for even and balanced Butterfly Wing placement, arrange the **Fabric V** Upper and Lower Butterfly Wings as shown. Diagrams show approximate distances between the Wings and the edge of the quilt. Note that measurements are a rough guide, and actual results may vary from quilter to quilter. The Top Wings should slightly overlap the Bottom Wings toward the center of the Wings. To ensure that the Left and Right Wings are spaced properly in the center, place the **Fabric Q** Butterfly Body in the center of the quilt temporarily to make sure that the Butterfly Body will overlap both the Left and Right Wings slightly, hiding any **Fabric B** background underneath.
7. Arrange the Butterfly Wings until fully satisfied. (*Designer Tip: To ensure satisfaction, take a picture of the Wing placement. Examine the picture for any changes you wish to make and adjust accordingly. **Keep in mind that art quilts will vary in applique placement.***)
8. Before fusing the background square and Butterfly Wings, thoroughly pin down the Wings to avoid shifting while moving to the ironing surface.
9. Fuse the Butterfly Wings thoroughly using a hot iron, and steam if necessary. (*Follow fusible web manufacturer's instructions.*)



10. Using the decorative or zig-zag stitch of your choice, and a matching thread color, stitch the Wings down to complete the applique process for the Wings.
11. Using the same applique techniques described above, place the **Fabric Q** Butterfly Body, **Fabric Q** Left Antenna and **Fabric Q** Right Antenna onto the quilt and fuse. The Butterfly Body should slightly overlap the Left and Right Wings. The bottom raw edges of each Antenna should be hidden underneath the Butterfly Head. Stitch in place using the decorative stitch of your choice and matching thread.



# Take Flight



## BUTTERFLY DETAIL APPLIQUE INSTRUCTIONS:

*Designer Note: Butterfly detail applique (Templates A-LLL) are layered on all wings to achieve the butterfly's dimensional rainbow effect. Therefore, applique is completed in stages. The Upper Left and Upper Right Wings will be assembled in (2) stages. The Bottom Left and Bottom Right Wings will be assembled in (4) stages.*

## UPPER RIGHT & UPPER LEFT WING ASSEMBLY STAGE 1:

**12.** Begin Stage 1 of the Upper Right and Upper Left Wing assembly using the following guide and diagrams. Remove the paper from the glue side of each template listed below to prepare them for fusing. Before fusing, lay out the templates on each wing to 'audition' their placement and orientation. Ensure that all neighboring templates fit on the wing before fusing. Frequently check diagrams shown to ensure that templates are oriented correctly.

**13.** Place and fuse the following templates onto the Upper Right and Upper Left Wings. Then stitch in place using the applique instructions above as a guide. **(The Upper Left Wing will use Regular Templates, and the Upper Right Wing will use Reversed Templates.):**

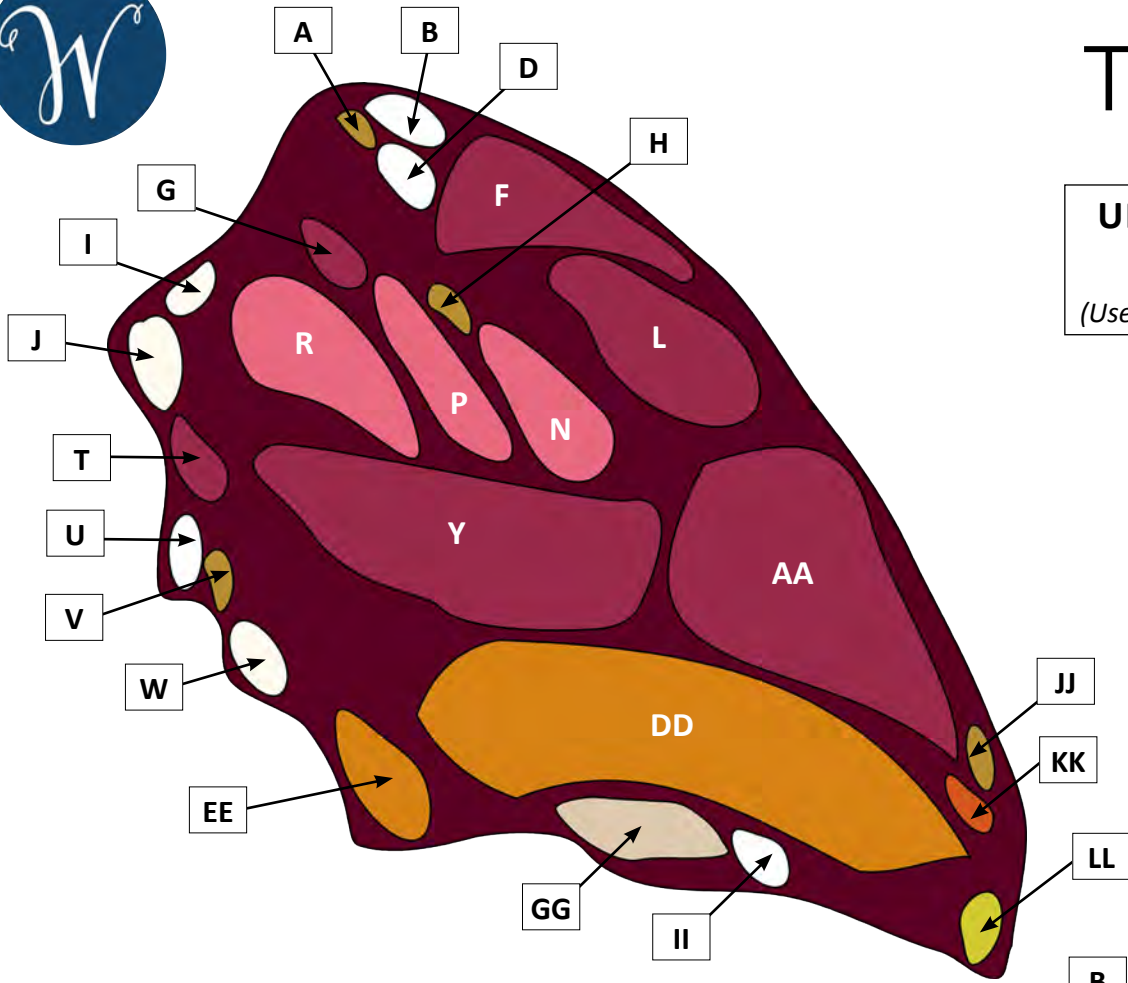
- a. **Fabric U** Templates A and AR
- b. **Fabric A** Templates B and BR
- c. **Fabric A** Templates D and DR
- d. **Fabric J** Templates F and FR
- e. **Fabric J** Templates G and GR
- f. **Fabric U** Templates H and HR
- g. **Fabric A** Templates I and IR
- h. **Fabric A** Templates J and JR
- i. **Fabric J** Templates L and LR
- j. **Fabric L** Templates N and NR
- k. **Fabric L** Templates P and PR
- l. **Fabric L** Templates R and R-R
- m. **Fabric J** Templates T and TR

- n. **Fabric A** Templates U and UR
- o. **Fabric U** Templates V and VR
- p. **Fabric A** Templates W and WR
- q. **Fabric J** Templates Y and YR
- r. **Fabric J** Templates AA and AAR
- s. **Fabric O** Templates DD and DDR
- t. **Fabric O** Templates EE and EER
- u. **Fabric E** Templates GG and GGR
- v. **Fabric A** Templates II and IIR
- w. **Fabric U** Templates JJ and JJR
- x. **Fabric S** Templates KK and KKR
- y. **Fabric P** Templates LL and LLR



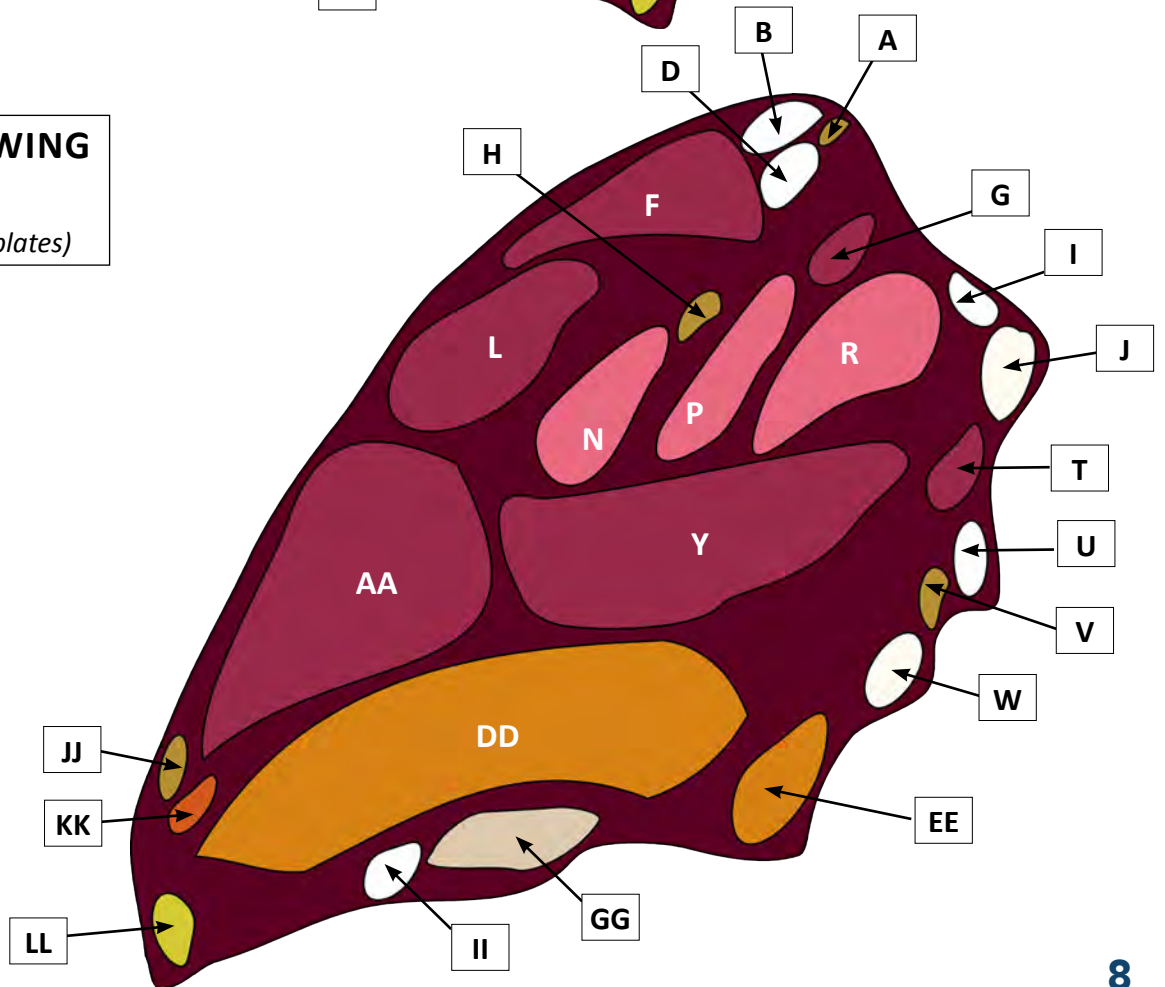


# Take Flight



**UPPER LEFT WING**  
Stage 1  
*(Uses Right Side of Templates)*

**UPPER RIGHT WING**  
Stage 1  
*(Uses Reversed Templates)*





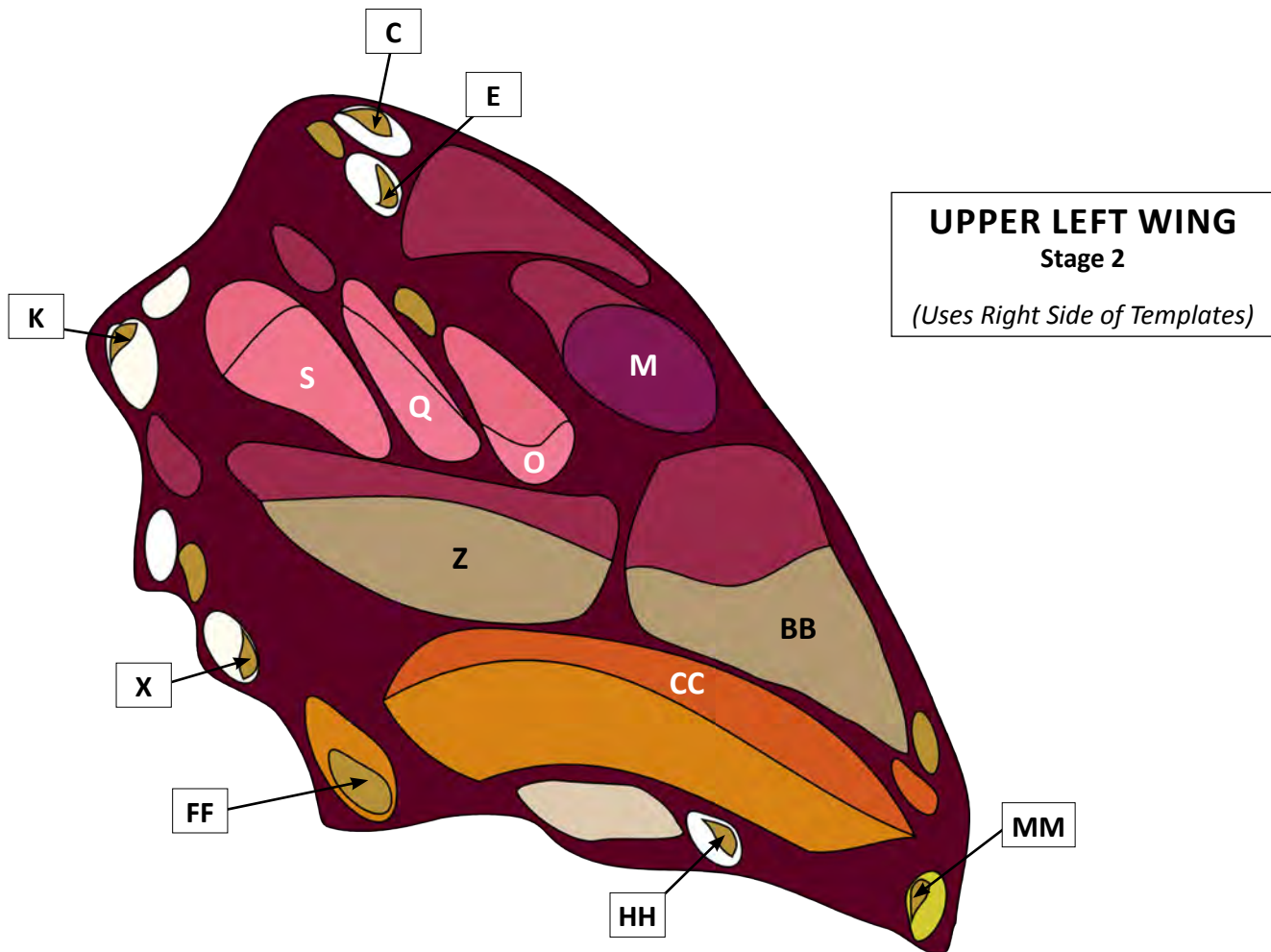
# Take Flight

## UPPER RIGHT & UPPER LEFT WING ASSEMBLY STAGE 2:

**14.** Begin Stage 2 of the Upper Right and Upper Left Wing assembly using the following guide and diagrams. Remove the paper from the glue side of each template listed below to prepare them for fusing. Use detailed instructions provided in Step 12 to prepare for the applique process.

**15.** Place and fuse the following templates onto the Upper Right and Upper Left Wings. Then stitch in place using the applique instructions above as a guide. *(The Upper Left Wing will use Regular Templates, and the Upper Right Wing will use Reversed Templates.):*

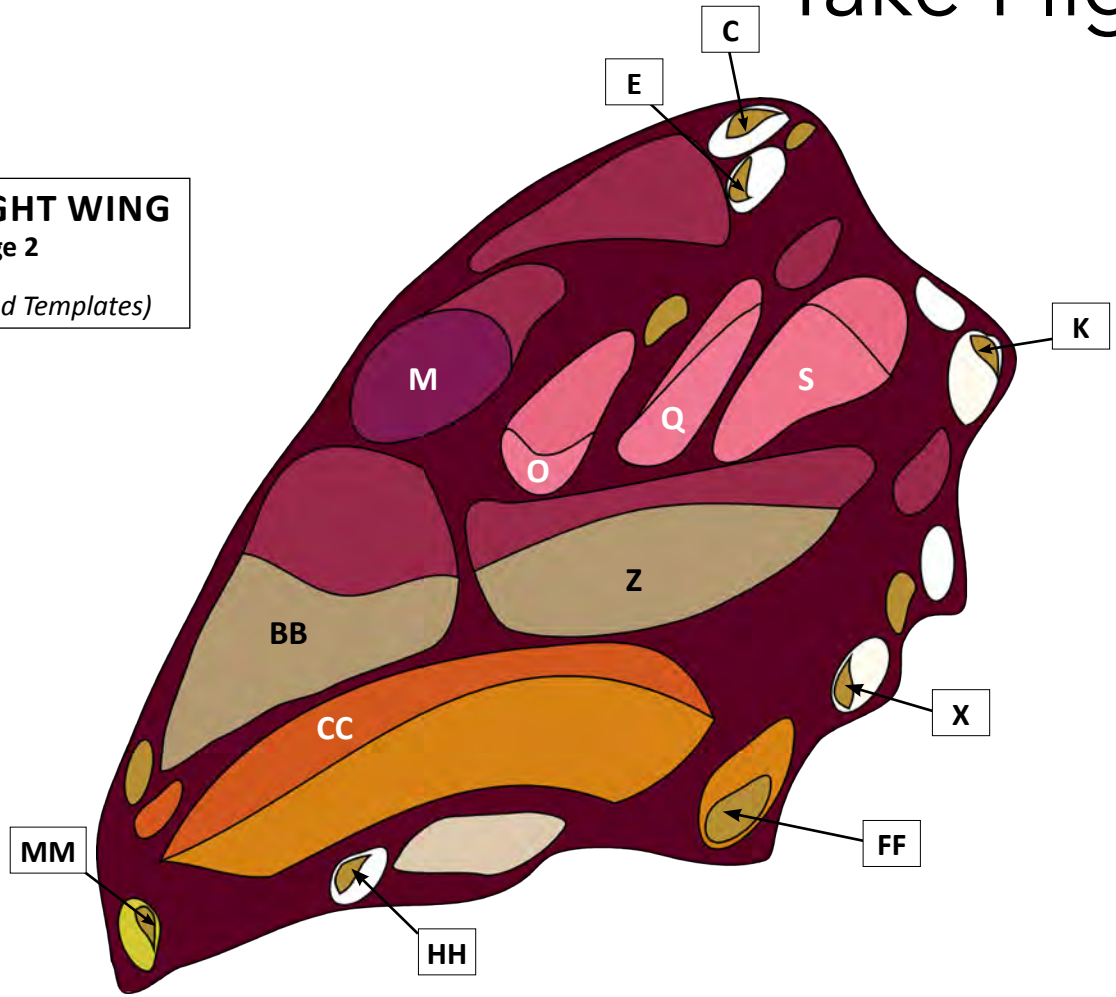
- a. **Fabric U** Templates C and CR
- b. **Fabric U** Templates E and ER
- c. **Fabric U** Templates K and KR
- d. **Fabric T** Templates M and MR
- e. **Fabric R** Templates O and OR
- f. **Fabric R** Templates Q and QR
- g. **Fabric N** Templates S and SR
- h. **Fabric U** Templates X and XR
- i. **Fabric C** Templates Z and ZR
- j. **Fabric C** Templates BB and BBR
- k. **Fabric S** Templates CC and CCR
- l. **Fabric U** Templates FF and FFR
- m. **Fabric U** Templates HH and HHR
- n. **Fabric U** Templates MM and MMR





# Take Flight

**UPPER RIGHT WING**  
Stage 2  
*(Uses Reversed Templates)*



**16.** Once Stage 2 templates are fused and stitched down, iron the Upper Left and Upper Right Wings and snip threads for a neat finish. At this step, ensure all templates were stitched down before proceeding.





# Take Flight

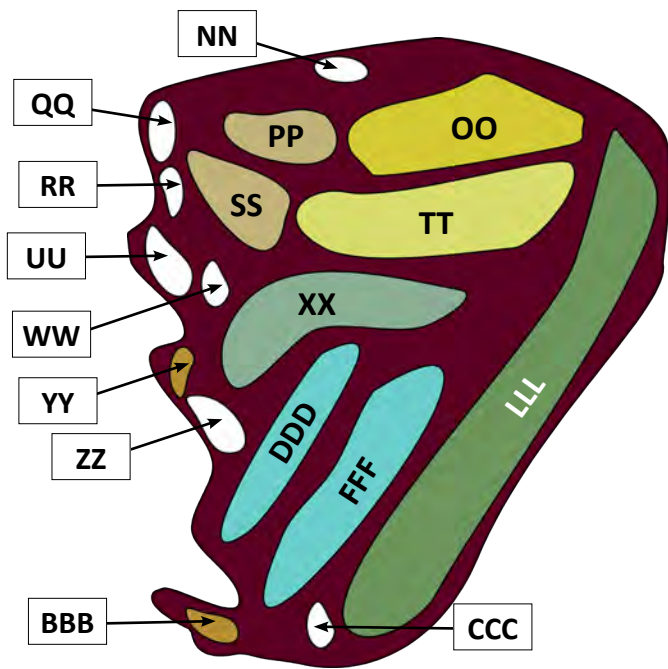
## LOWER RIGHT & LOWER LEFT WING ASSEMBLY STAGE 1:

17. Begin Stage 1 of the Lower Right and Lower Left Wing assembly using the following guide and diagrams. Remove the paper from the glue side of each template listed below to prepare them for fusing. Use detailed instructions provided in Step 12 to prepare for the applique process.

18. Place and fuse the following templates onto the Lower Right and Lower Left Wings. Then stitch in place using the applique instructions above as a guide. *(The Lower Left Wing will use Regular Templates, and the Lower Right Wing will use Reversed Templates.)*:

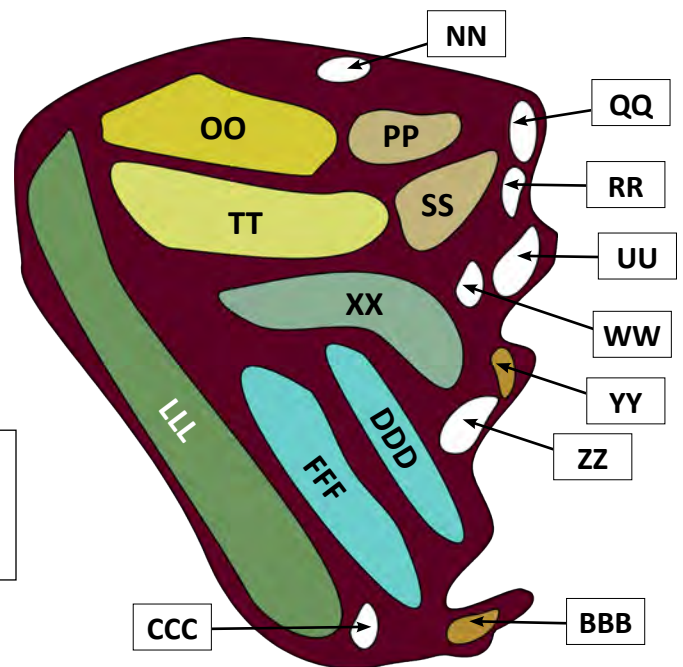
- a. **Fabric A** Templates NN and NNR
- b. **Fabric P** Templates OO and OOR
- c. **Fabric G** Templates PP and PPR
- d. **Fabric A** Templates QQ and QQR
- d. **Fabric A** Templates RR and RR-R
- f. **Fabric G** Templates SS and SSR
- g. **Fabric M** Templates TT and TTR
- h. **Fabric A** Templates UU and UUR
- i. **Fabric A** Templates WW and WWR

- j. **Fabric I** Templates XX and XXR
- k. **Fabric U** Templates YY and YYR
- l. **Fabric A** Templates ZZ and ZZR
- m. **Fabric U** Templates BBB and BBBR
- n. **Fabric A** Templates CCC and CCCR
- o. **Fabric K** Templates DDD and DDDR
- p. **Fabric K** Templates FFF and FFFR
- q. **Fabric D** Templates LLL and LLLR



**LOWER RIGHT WING**  
Stage 1  
*(Uses Reversed Templates)*

**LOWER LEFT WING**  
Stage 1  
*(Uses Right Side of Templates)*





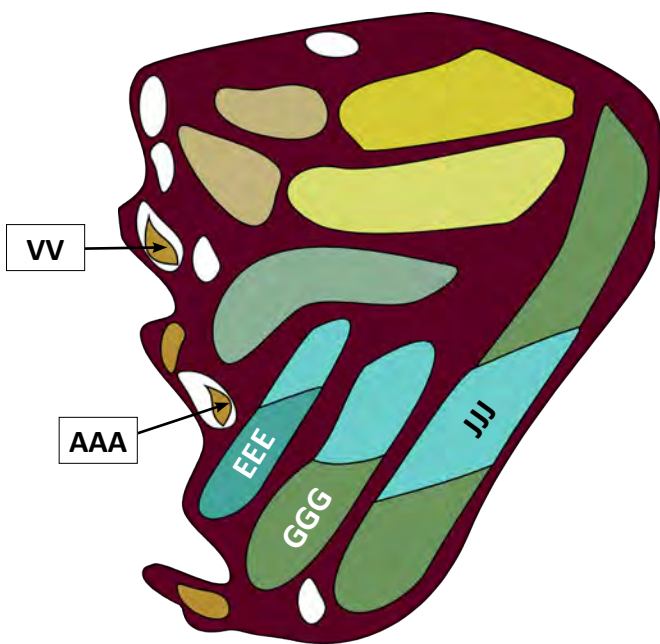
# Take Flight

## LOWER RIGHT & LOWER LEFT WING ASSEMBLY STAGE 2:

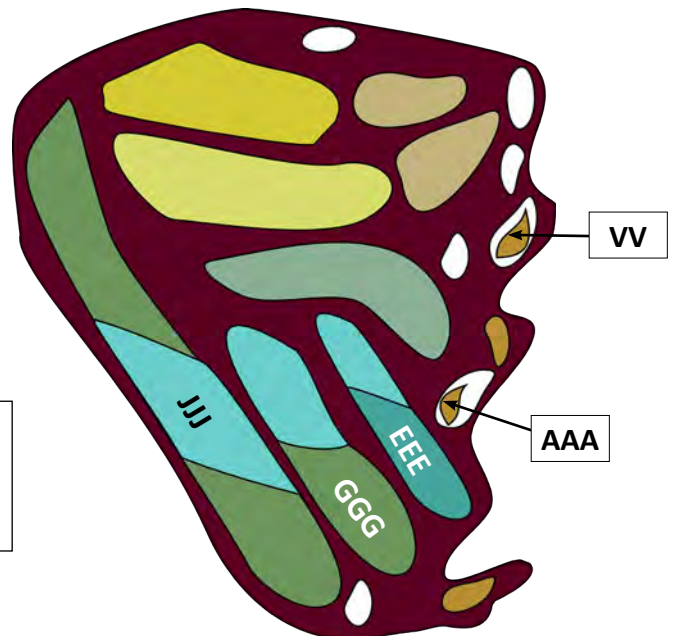
19. Begin Stage 2 of the Lower Right and Lower Left Wing assembly using the following guide and diagrams. Remove the paper from the glue side of each template listed below to prepare them for fusing. Use detailed instructions provided in Step 12 to prepare for the applique process.

20. Place and fuse the following templates onto the Lower Right and Lower Left Wings. Then stitch in place using the applique instructions above as a guide. **(The Lower Left Wing will use Regular Templates, and the Lower Right Wing will use Reversed Templates.):**

- a. Fabric U Templates VV and VVR
- b. Fabric U Templates AAA and AAAR
- c. Fabric F Templates EEE and EEER
- d. Fabric D Templates GGG and GGGR
- e. Fabric K Templates JJJ and JJR



**LOWER LEFT WING**  
Stage 2  
*(Uses Right Side of Templates)*



**LOWER RIGHT WING**  
Stage 2  
*(Uses Reversed Templates)*



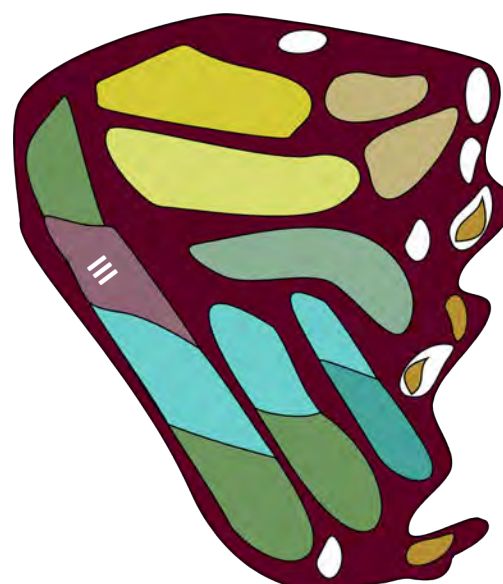
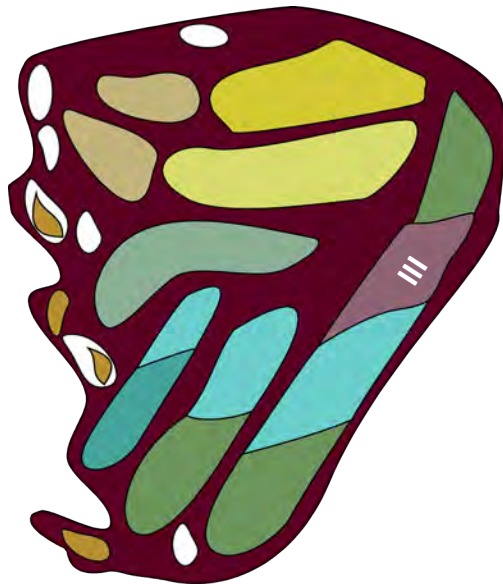
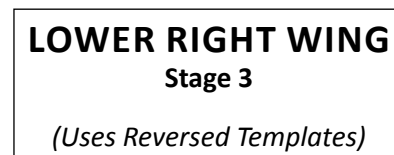
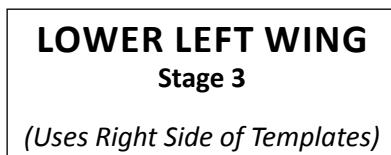
# Take Flight

## LOWER RIGHT & LOWER LEFT WING ASSEMBLY STAGE 3:

**21.** Begin Stage 3 of the Lower Right and Lower Left Wing assembly using the following guide and diagrams. Remove the paper from the glue side of each template listed below to prepare them for fusing. Use detailed instructions provided in Step 12 to prepare for the applique process.

**22.** Place and fuse the following templates onto the Lower Right and Lower Left Wings. Then stitch in place using the applique instructions above as a guide. *(The Lower Left Wing will use Regular Templates, and the Lower Right Wing will use Reversed Templates.):*

a. Fabric H Templates III and IIIR



## LOWER RIGHT & LOWER LEFT WING ASSEMBLY STAGE 4:

**23.** Begin Stage 4 of the Lower Right and Lower Left Wing assembly using the following guide and diagrams. Remove the paper from the glue side of each template listed below to prepare them for fusing. Use detailed instructions provided in Step 12 to prepare for the applique process.

**24.** Place and fuse the following templates onto the Lower Right and Lower Left Wings. Then stitch in place using the applique instructions above as a guide. *(The Lower Left Wing will use Regular Templates, and the Lower Right Wing will use Reversed Templates.):*

a. Fabric I Templates HHH and HHHR

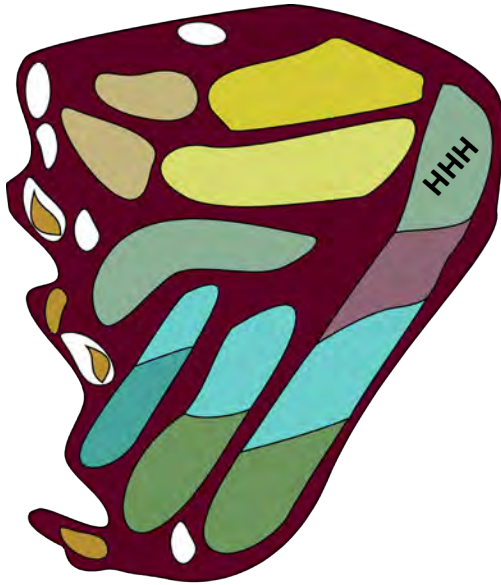


# Take Flight

## LOWER LEFT WING

Stage 4

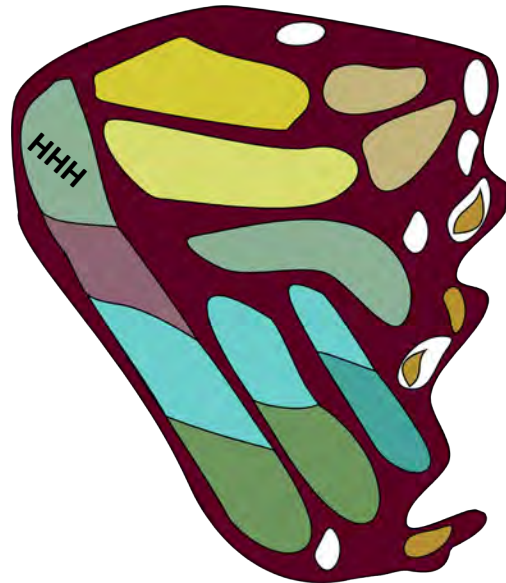
*(Uses Right Side of Templates)*



## LOWER RIGHT WING

Stage 4

*(Uses Reversed Templates)*



25. Once Stage 4 templates are fused and stitched down, iron the Lower Left and Lower Right Wings and snip threads for a neat finish. At this step, ensure all templates were stitched down before proceeding. If all applique have been secured, your Take Flight quilt is now complete!





# Take Flight



## Finishing the Quilt:

26. Layer the quilt top with batting and backing. Baste quilt layers together.
27. Quilt as desired.
28. Bind quilt using your preferred binding method and (7) **Fabric J** 2 ¼" x WOF strips. Enjoy!



# Take Flight Butterfly Pattern Templates

## Designed by: Natalie Crabtree for Windham Fabrics

*Cut out each Template along the printed black lines from all pages. Some templates are printed across multiple pages. Tape templates together aligning the black printed lines.*

*When cutting regular templates for the left wings, the template should be placed printed side UP onto the smooth side of fusible web to trace each piece.*

*To reverse templates for the right wings, the template should be placed printed side DOWN onto the smooth side of fusible web to trace each piece. This will create a mirror image piece.*

Template D

Template T

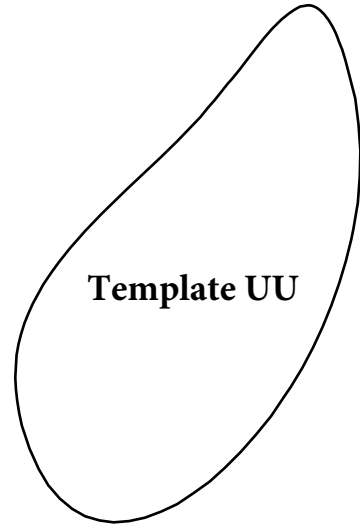
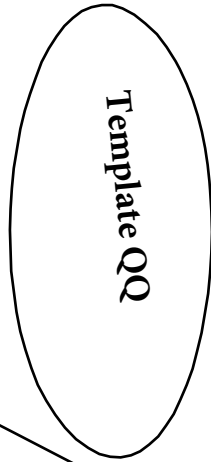
Upper Wing  
Piece 1

1 inch

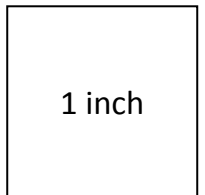


windhamfabrics.com

Print templates  
at 100% or  
Actual Size.



**Upper Wing  
Piece 2**



Print templates  
at 100% or  
Actual Size.

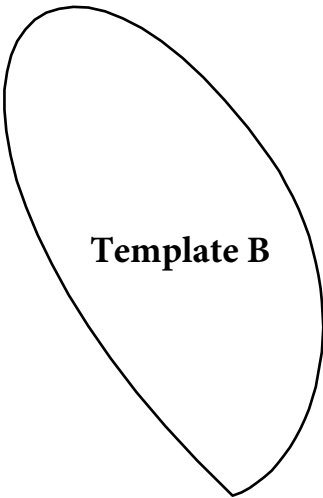




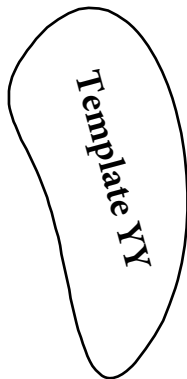
windhamfabrics.com



Print templates  
at 100% or  
Actual Size.

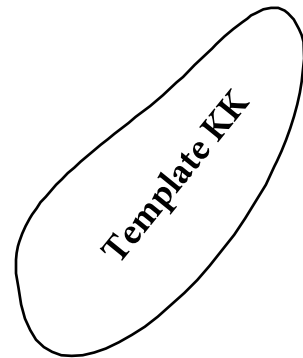


**Template B**



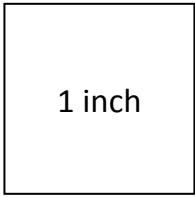
**Template YY**

**Template R**

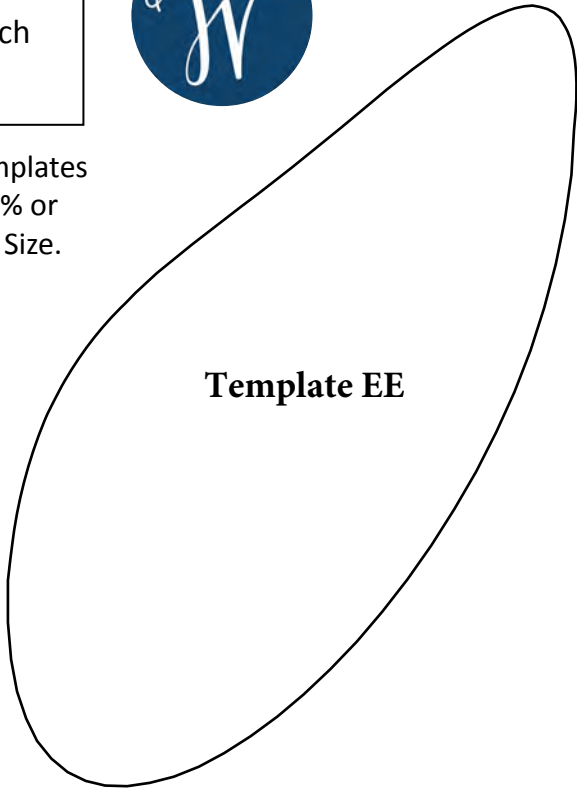


**Template KK**

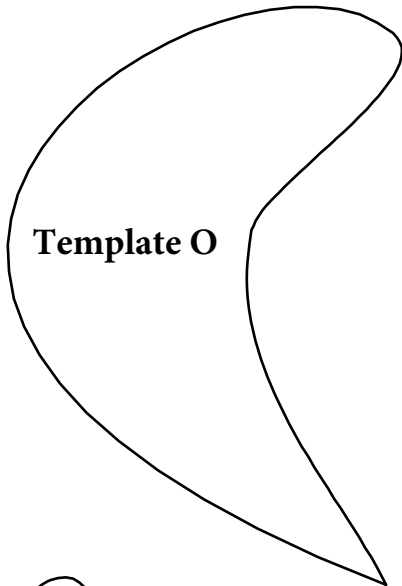
**Upper Wing  
Piece 3**



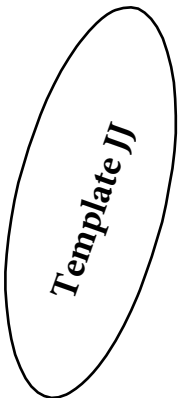
Print templates  
at 100% or  
Actual Size.



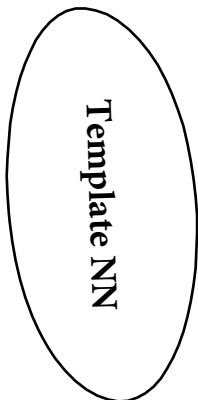
**Template EE**



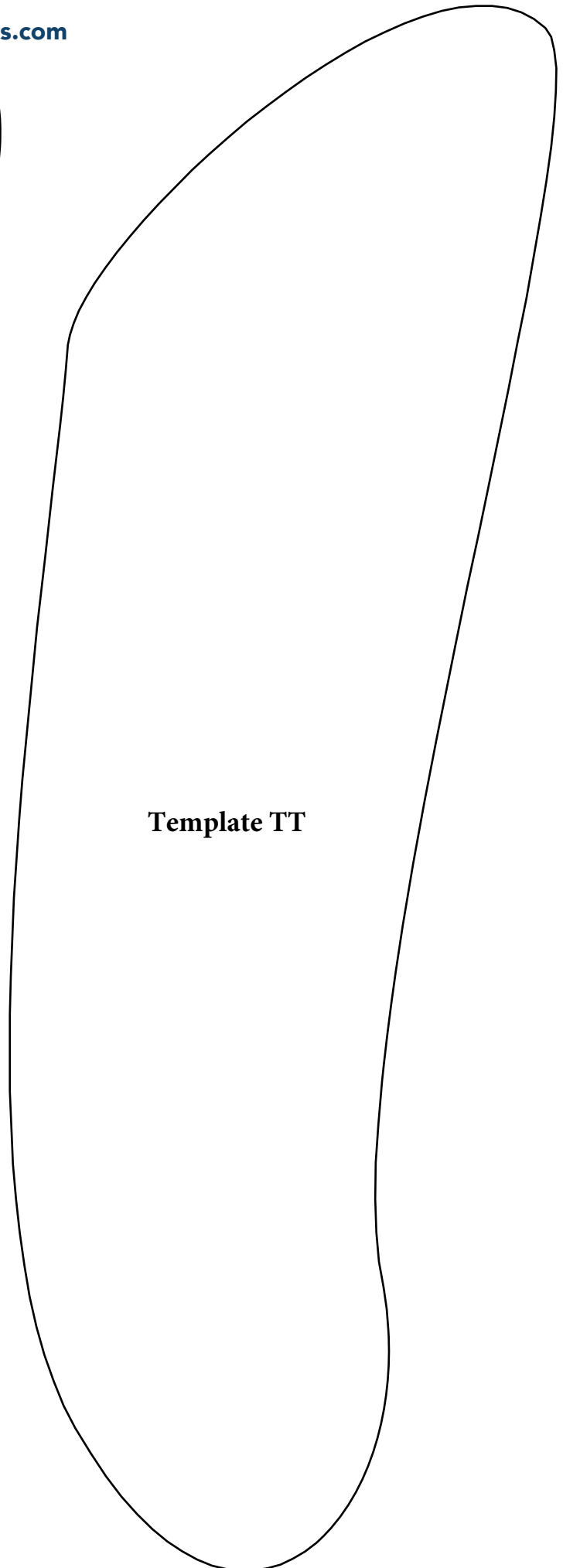
**Template O**



**Template JJ**



**Template NN**



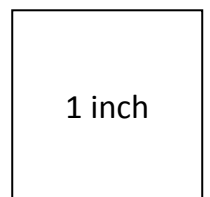
**Template TT**

AREA OUTSIDE OF PRINTED BLACK LINE IS NOT A TEMPLATE

AREA OUTSIDE OF PRINTED BLACK LINE IS NOT A TEMPLATE

**Lower Wing  
Piece 1**

**20**

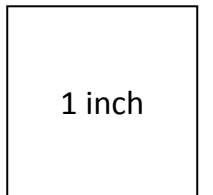


Print templates  
at 100% or  
Actual Size.



[windhamfabrics.com](http://windhamfabrics.com)

**Lower Wing  
Piece 2**

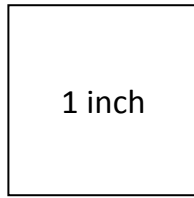


Print templates  
at 100% or  
Actual Size.



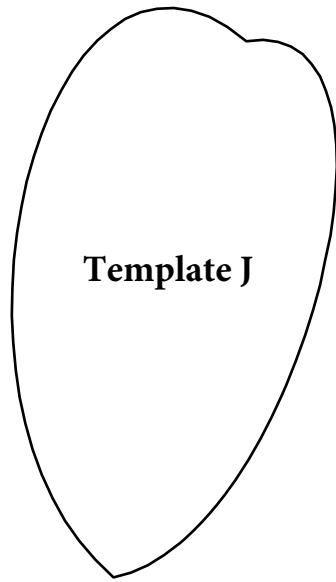


windhamfabrics.com

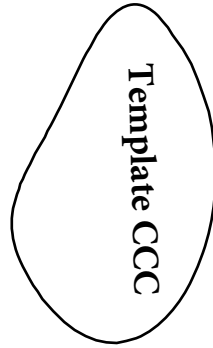


1 inch

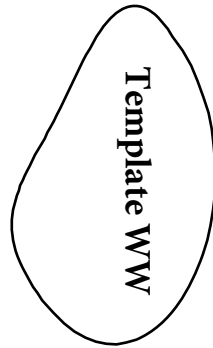
Print templates  
at 100% or  
Actual Size.



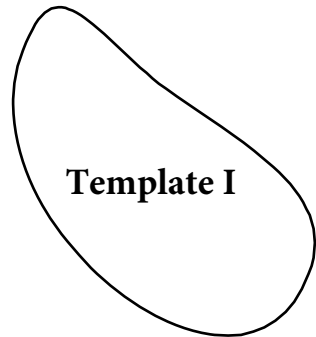
**Template J**



**Template CCC**



**Template WW**

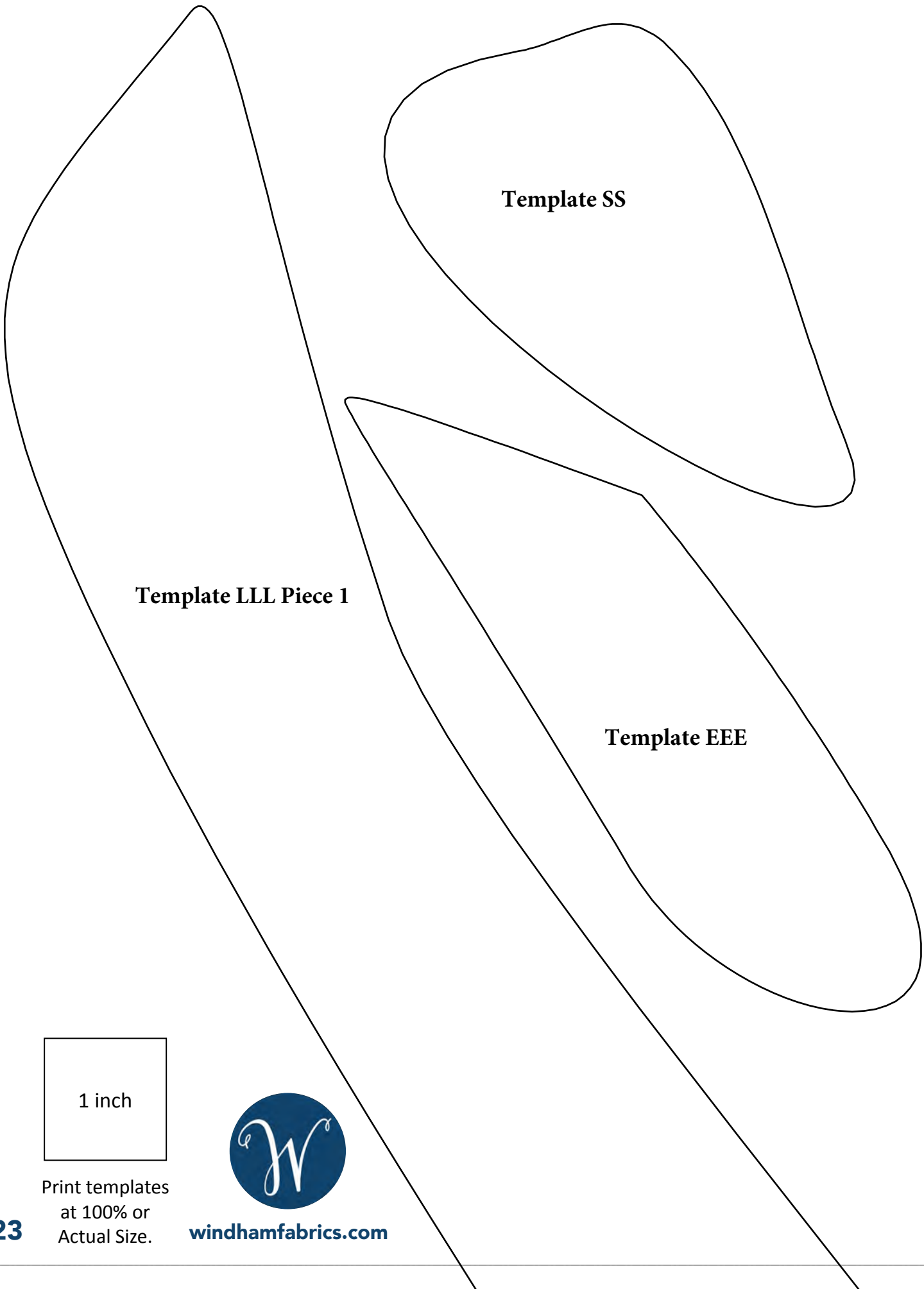


**Template I**



**Template C**

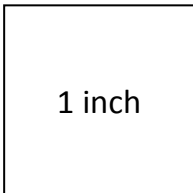
**Lower Wing  
Piece 3**



**Template SS**

**Template LLL Piece 1**

**Template EEE**



Print templates  
at 100% or  
Actual Size.

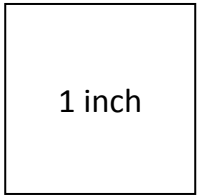


[windhamfabrics.com](http://windhamfabrics.com)

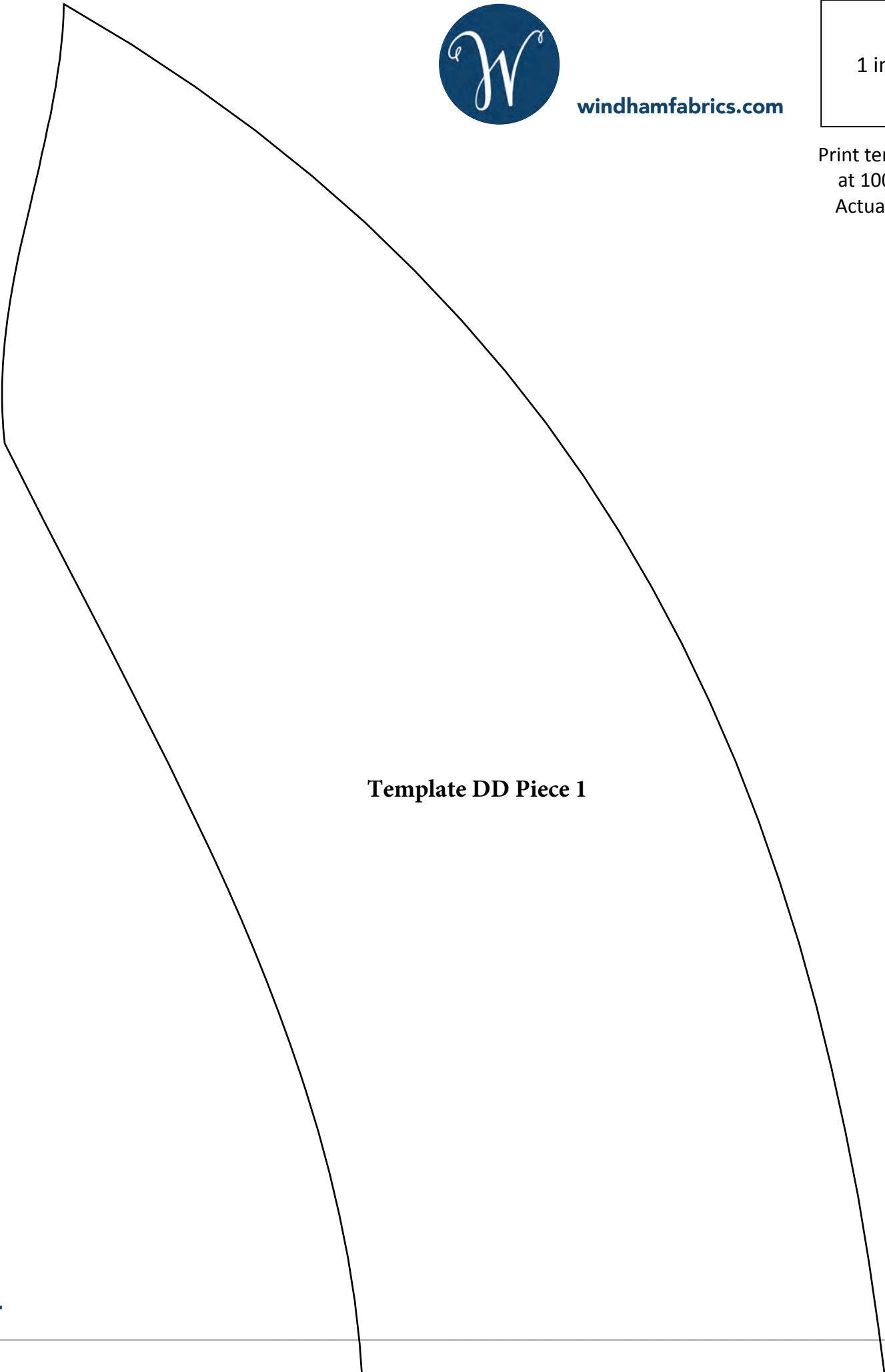




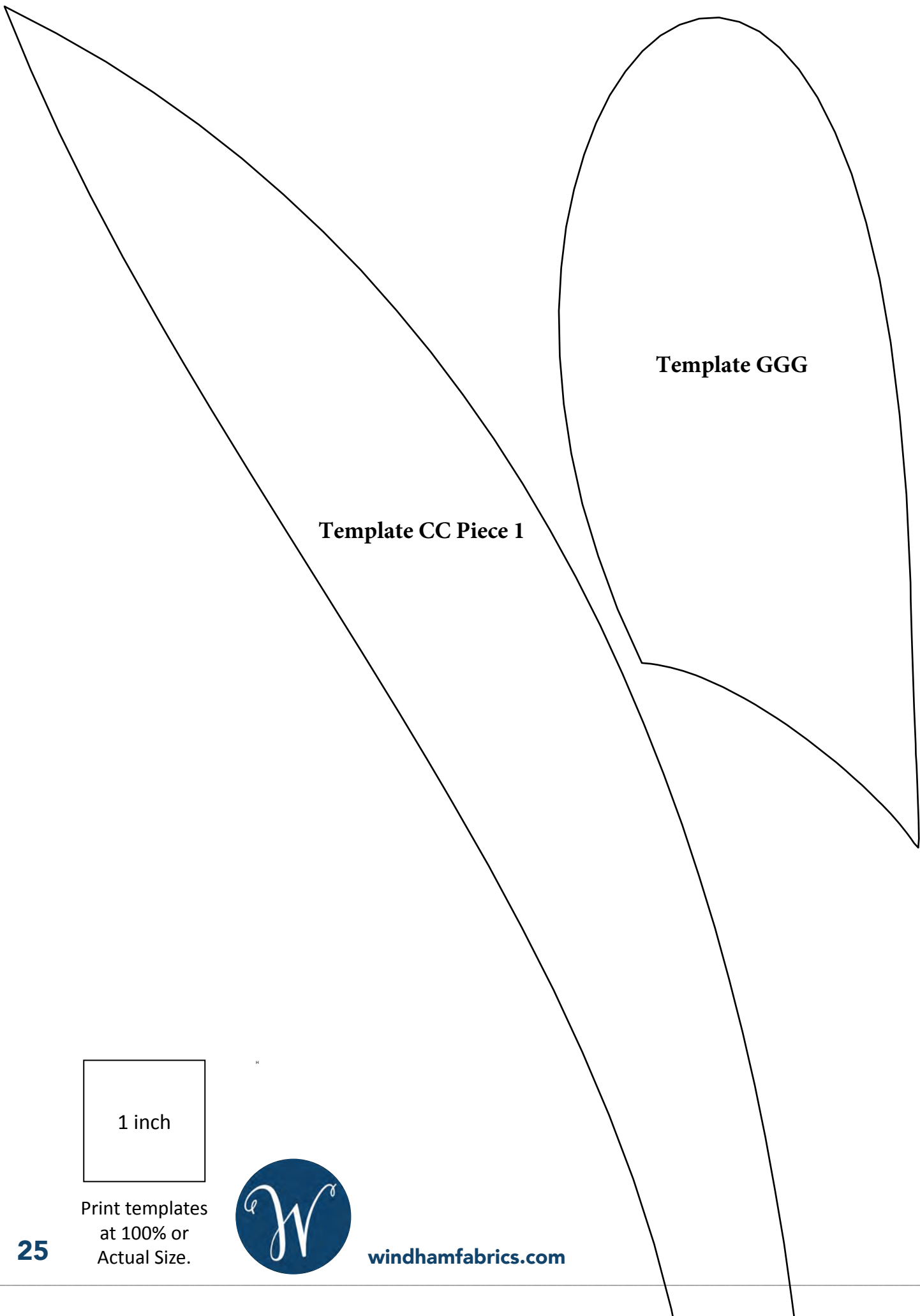
windhamfabrics.com



Print templates  
at 100% or  
Actual Size.

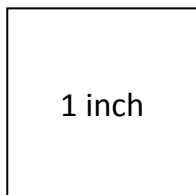


**Template DD Piece 1**



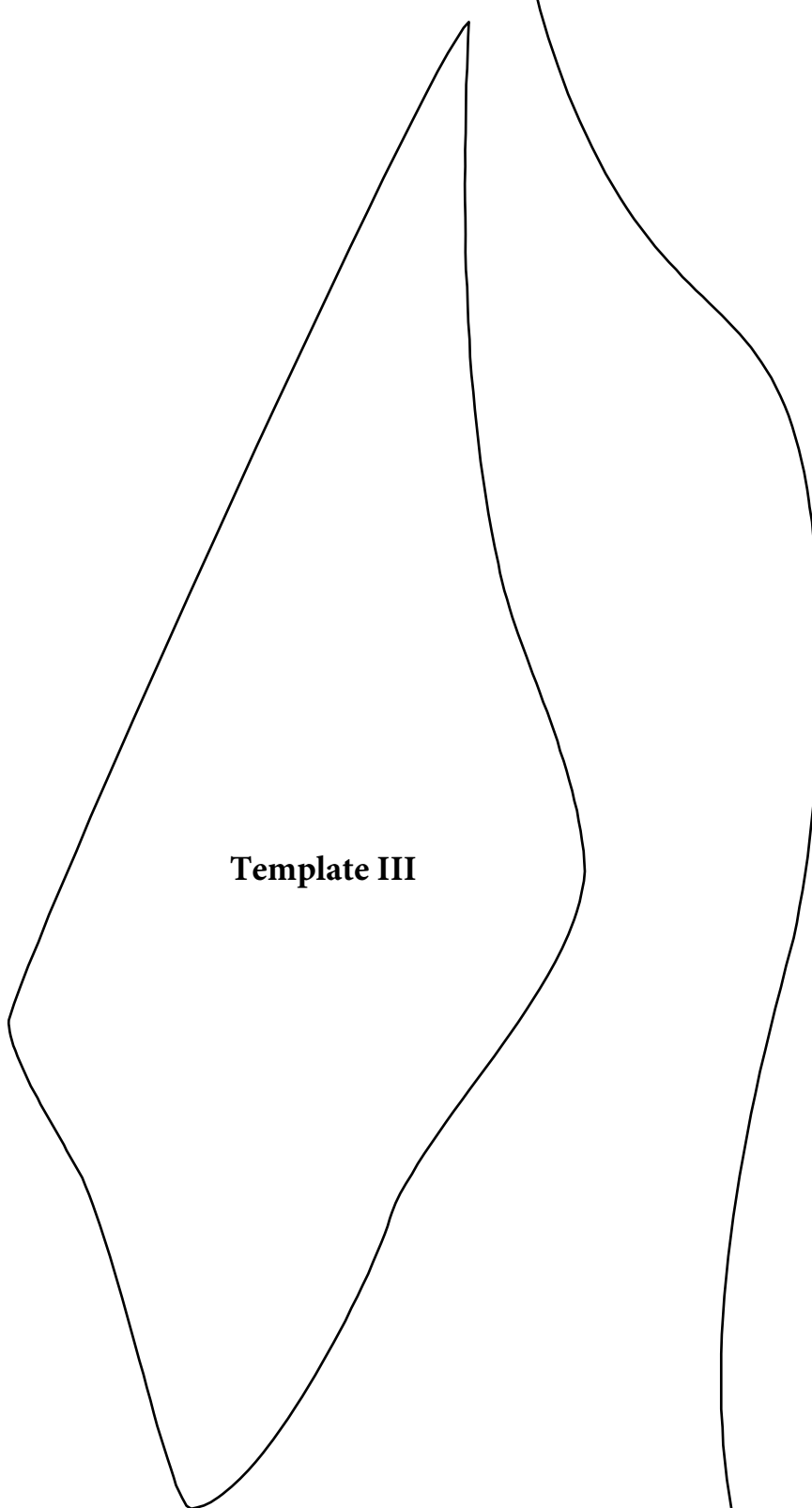
**Template CC Piece 1**

**Template GGG**



Print templates  
at 100% or  
Actual Size.



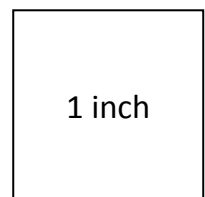


**Template III**

**Upper Wing  
Piece 4**



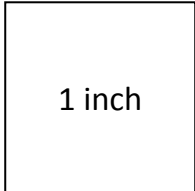
**windhamfabrics.com**



1 inch

Print templates  
at 100% or  
Actual Size.

**Entire Page is Upper Wing  
Piece 5**

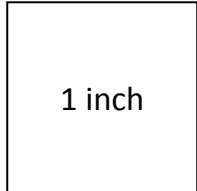


Print templates  
at 100% or  
Actual Size.



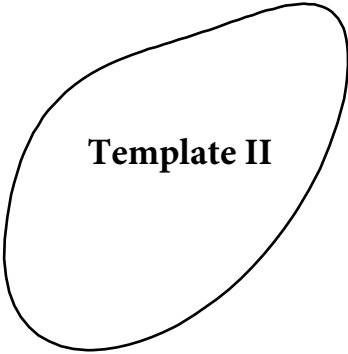
Cut off corner  
at black  
printed line

**Entire Page is Upper Wing  
Piece 6**

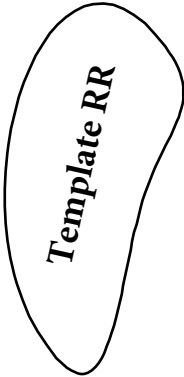


Print templates  
at 100% or  
Actual Size.

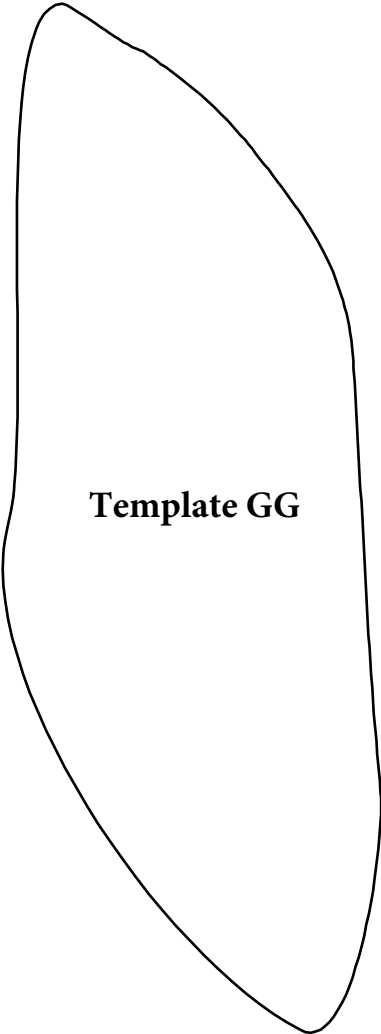




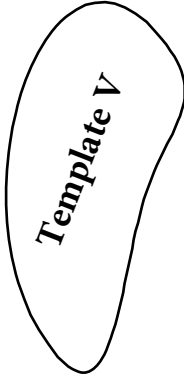
**Template II**



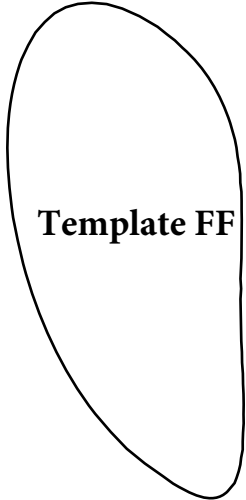
**Template RR**



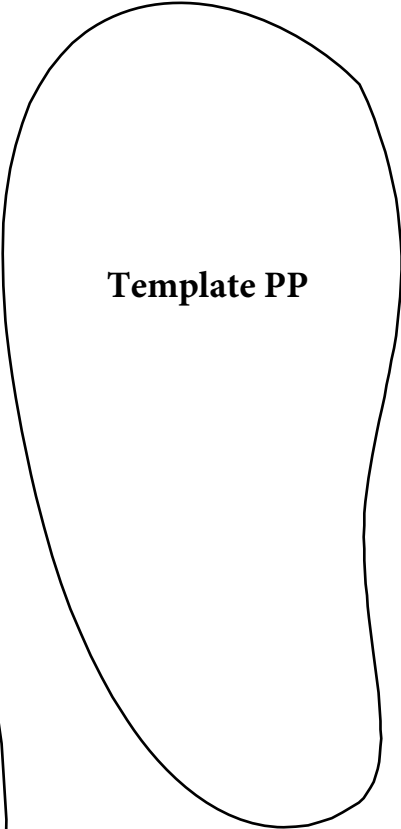
**Template GG**



**Template V**

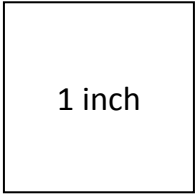


**Template FF**



**Template PP**

**Upper Wing  
Piece 7**



1 inch

Print templates  
at 100% or  
Actual Size.





windhamfabrics.com

1 inch

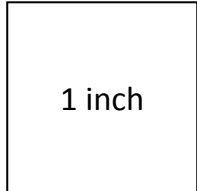
Print templates  
at 100% or  
Actual Size.

**Lower Wing  
Piece 4**

**Template L**

**Template VV**

**Entire Page is Lower Wing  
Piece 5**



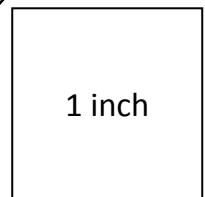
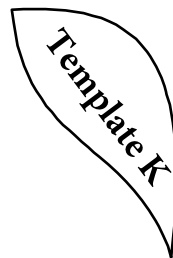
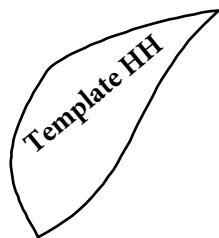
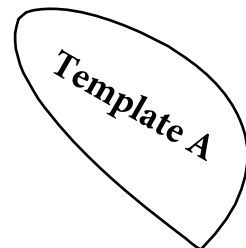
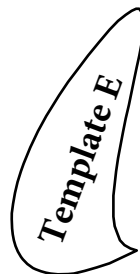
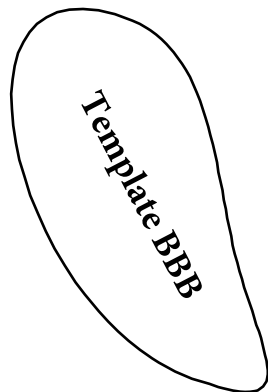
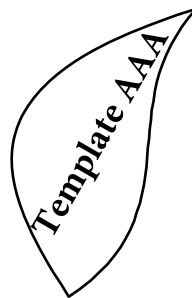
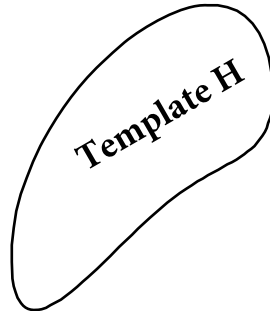
Print templates  
at 100% or  
Actual Size.



[windhamfabrics.com](http://windhamfabrics.com)



Lower Wing  
Piece 6



Print templates  
at 100% or  
Actual Size.



**Butterfly Body  
Piece 3**

**Template LLL Piece 2**

**Template Z Piece 1**



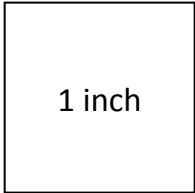
**windhamfabrics.com**



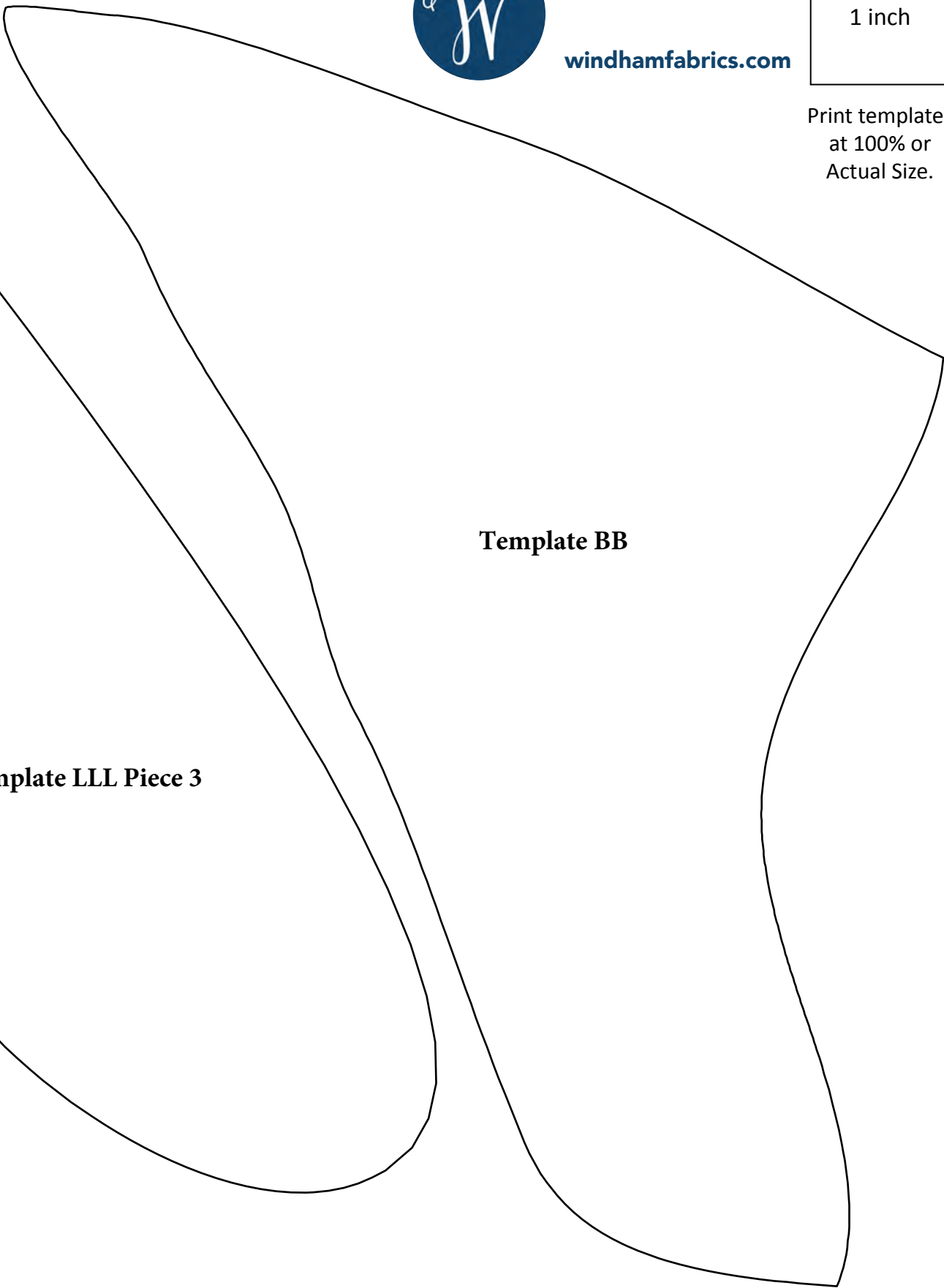
Print templates  
at 100% or  
Actual Size.



windhamfabrics.com



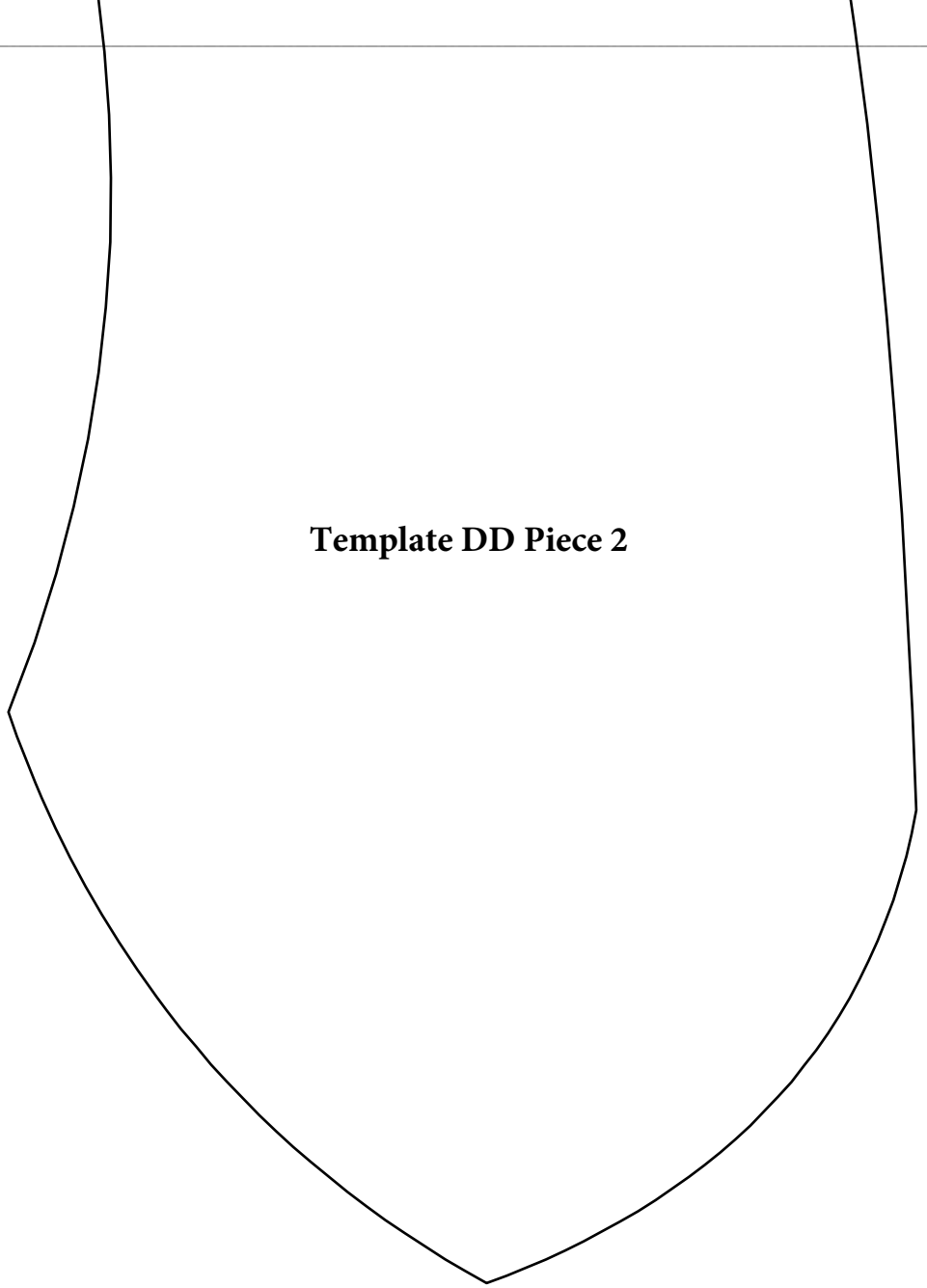
Print templates  
at 100% or  
Actual Size.



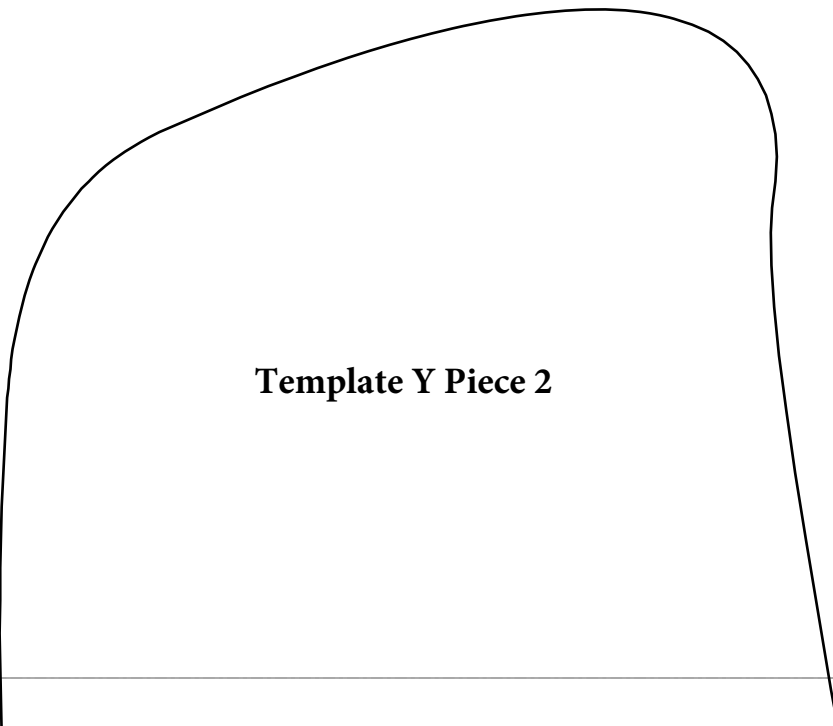
**Template LLL Piece 3**

**Template BB**

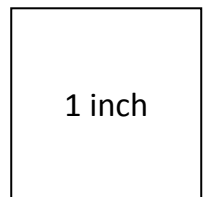
**Template DD Piece 2**



**Template Y Piece 2**



**windhamfabrics.com**



1 inch

Print templates  
at 100% or  
Actual Size.

*Right Antenna*

**Template CC Piece 2**

**Template OO**

1 inch

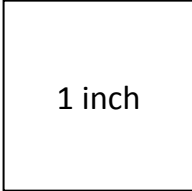
Print templates  
at 100% or  
Actual Size.



**Template FFF Piece 1**

**Template LL**

**Template F**



1 inch



**Upper Wing  
Piece 9**

**Template FFF Piece 2**

**Template G**

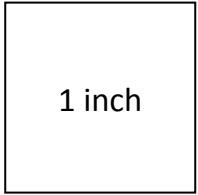
**Template W**

1 inch



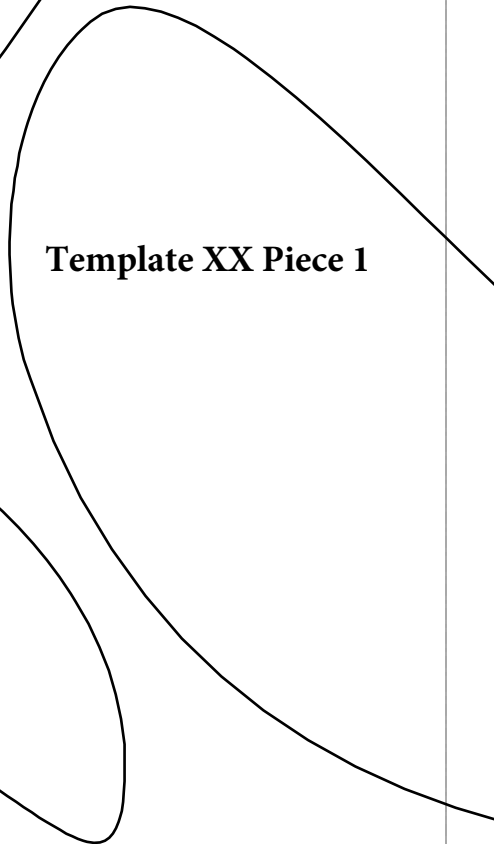
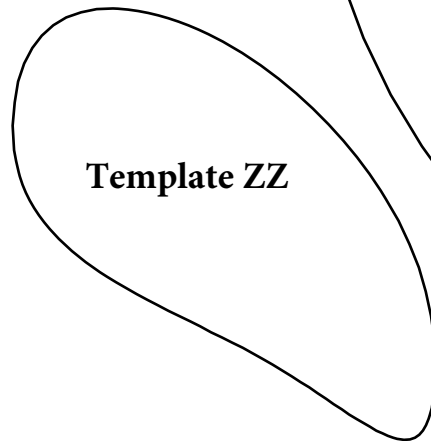
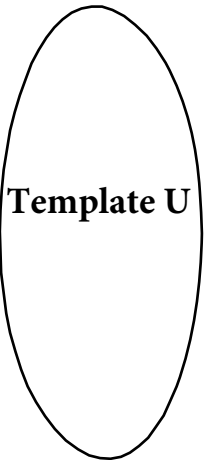


windhamfabrics.com



Print templates  
at 100% or  
Actual Size.

**Upper Wing  
Piece 10**

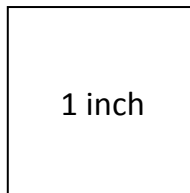




**Upper Wing  
Piece 11**



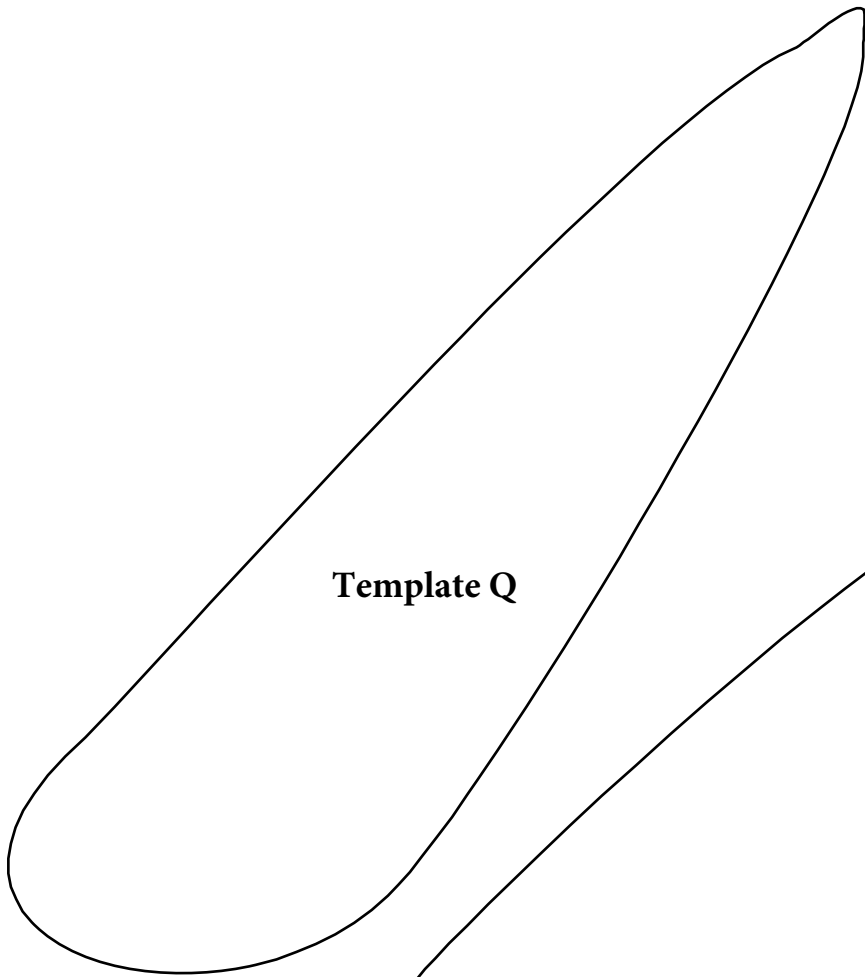
**windhamfabrics.com**



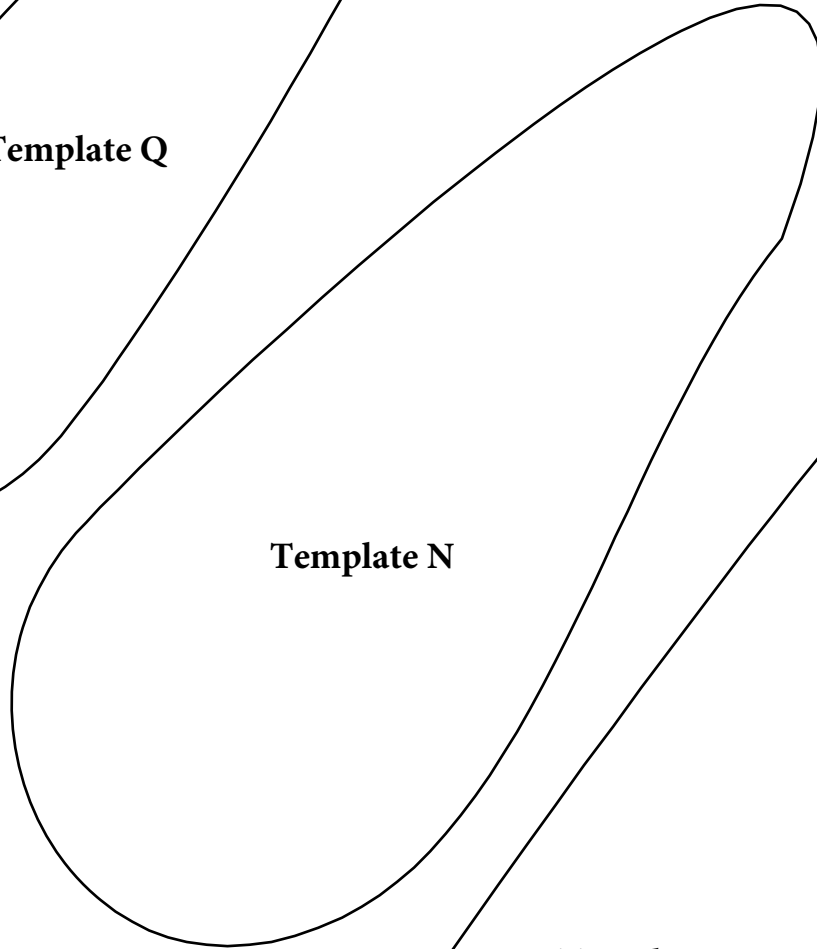
Print templates  
at 100% or  
Actual Size.

**Template HHH**

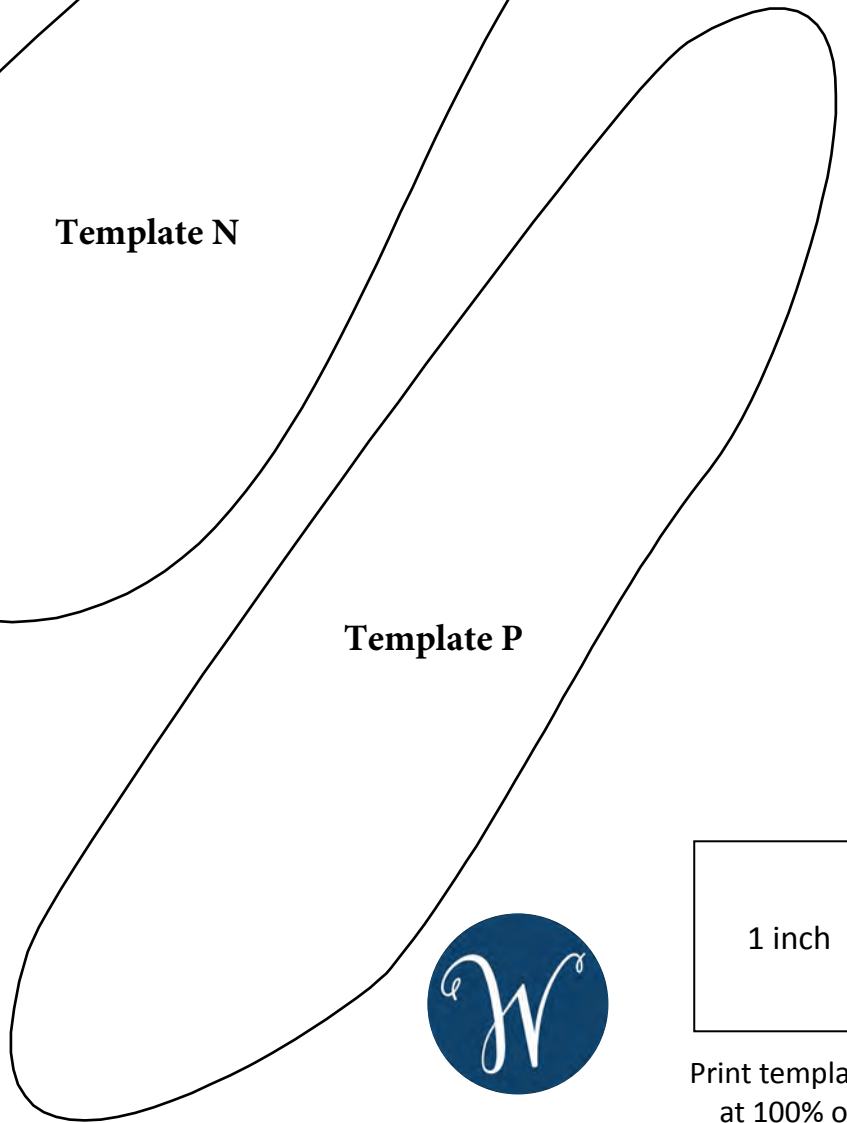
**Template XX Piece 2**



**Template Q**



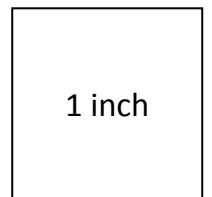
**Template N**



**Template P**

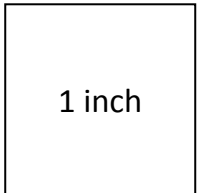
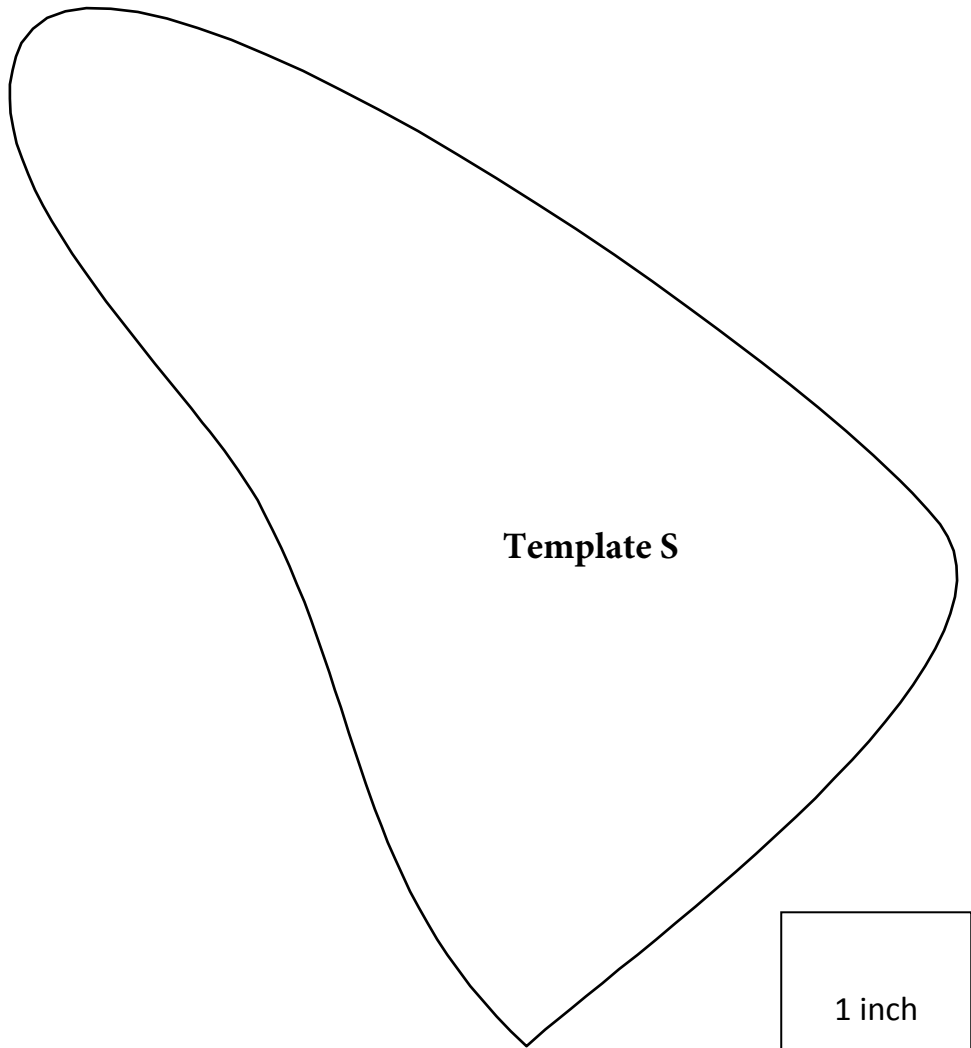
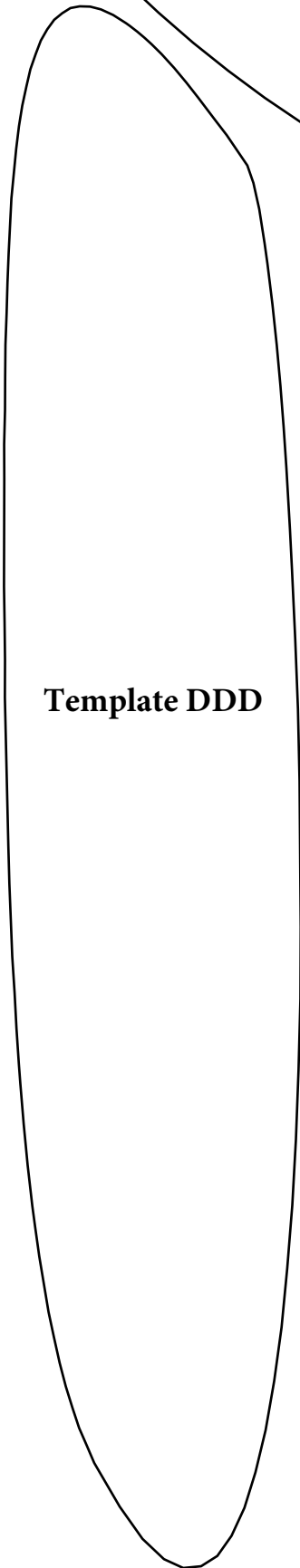


[windhamfabrics.com](http://windhamfabrics.com)



Print templates  
at 100% or  
Actual Size.

**Lower Wing  
Piece 7**



Print templates  
at 100% or  
Actual Size.



**Template Z Piece 2**

**Lower Wing  
Piece 8**

**Template JJJ**

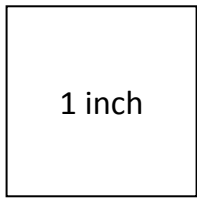
1 inch

Print templates  
at 100% or  
Actual Size.



**Template AA Piece 2**

**Template AA Piece 1**



Print templates  
at 100% or  
Actual Size.

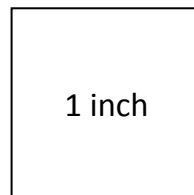


**Left Antenna**

**Template Y Piece 1**

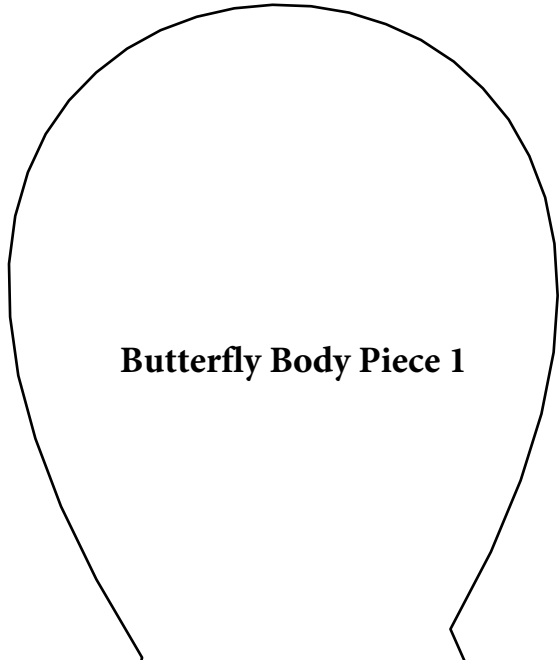


[windhamfabrics.com](http://windhamfabrics.com)

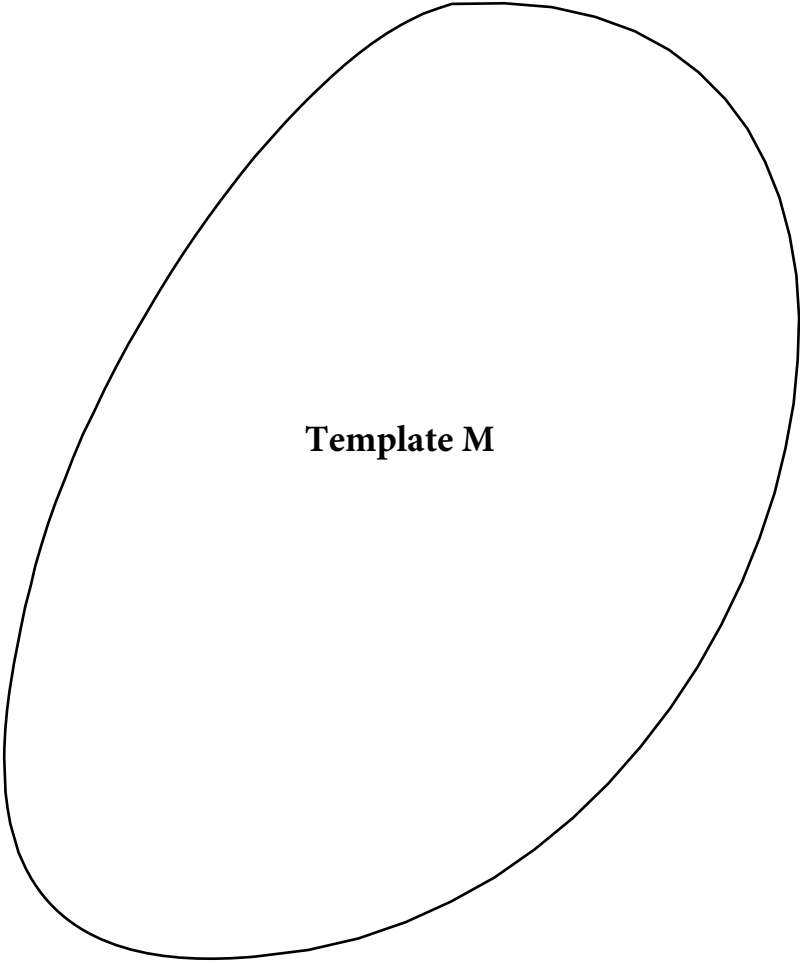


1 inch

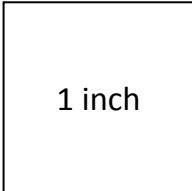
Print templates  
at 100% or  
Actual Size.



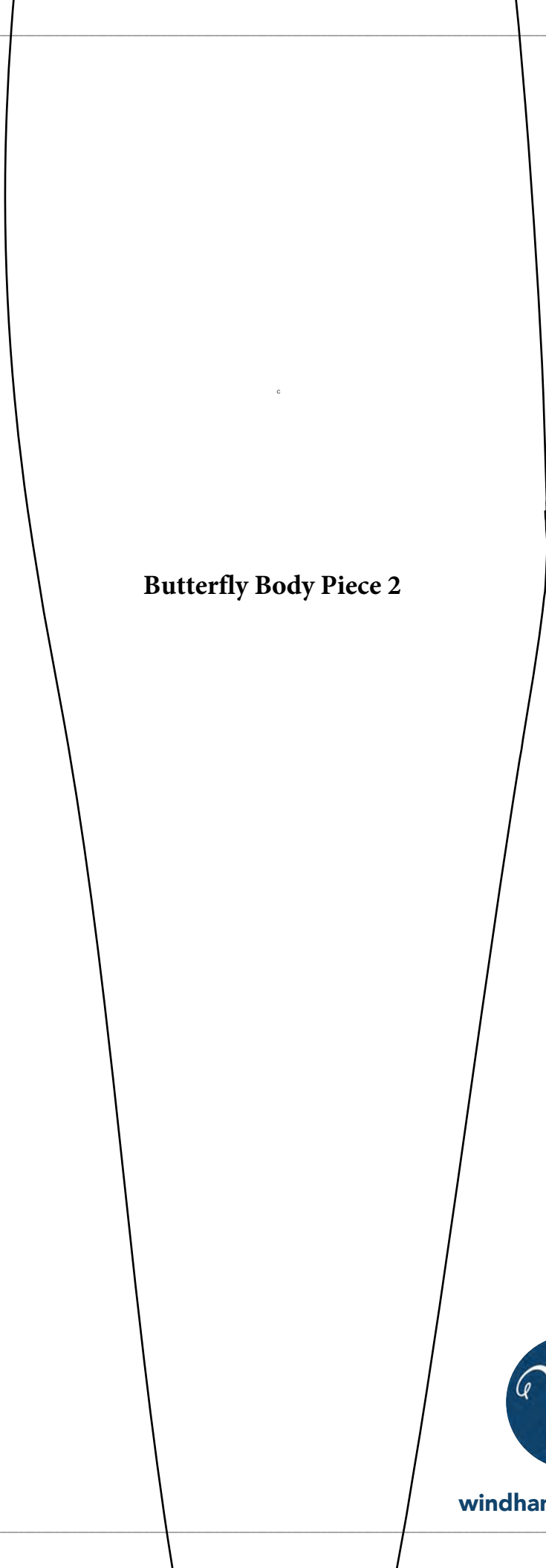
**Butterfly Body Piece 1**



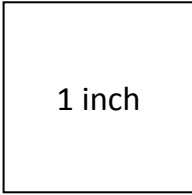
**Template M**



Print templates  
at 100% or  
Actual Size.



**Butterfly Body Piece 2**



1 inch



[windhamfabrics.com](http://windhamfabrics.com)

Print templates  
at 100% or  
Actual Size.